

Corporate Office
21850 88th Place South
Kent, WA 98031

Idaho Office
62 W 465 N, #3
Blackfoot, ID 83221



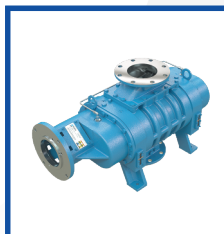
Locations
Western Washington: (253) 740-0530
Eastern Washington: (509) 949-3368
Oregon, Idaho & Montana: (208) 360-3833
Email: info@nwflowtech.com

The Northwest's Flow Technology Experts providing engineering services since 1997

Northwest Flow Technologies, a Division of Northwest Industrial Repair, Inc., provides engineering services to customers in a range of industries including Food & Beverage, Chemical, Plastics, Power & Energy, Mining, Aerospace, Water & Wastewater, Pharmaceutical, Metallurgy and more. Northwest Flow Technologies collaborates with the customer in understanding their process needs before moving forward to determine the optimal solution and package design whether it is a standard blower package or a custom package that meets the application operating parameters and project budget requirements.

General Service Offering

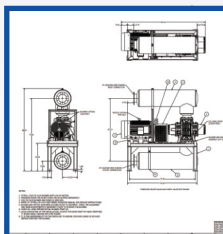
- Equipment Sizing & Selection
- New Equipment Sales
- Accessories and Controls
- Technical Support
- Application Engineering
- System Engineering
- Custom Engineered Packages
- Welding & Fabrication
- Installation & Commissioning Support
- 3D CAD Engineering Software
- 2D CAD Drawings



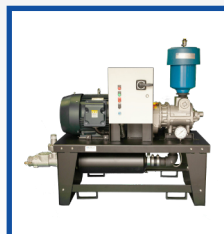
NEW EQUIPMENT



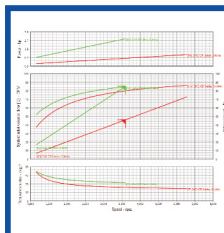
3D CAD SOFTWARE



2D CAD DRAWINGS



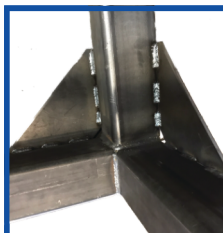
CUSTOM PACKAGES



EQUIPMENT SIZING



FABRICATION



WELDING



COMMISSIONING

Package Accessories

- Inlet and Discharge Silencers
- Inlet Air Filters
- Filter Restriction Gauges
- Pressure Relief Valves
- Vacuum Relief Valves
- Check Valves
- Temperature Gauges
- Pressure Gauges
- Vacuum Gauges
- V-Belt Drive or Direct Drive
- V-Belt Guards
- Coupling Guards
- VFD Drives
- Combination Starter Control Panels
- AC Motors

M-D Pneumatics® KINNEY®

Authorized M-D Pneumatics® & KINNEY® Distributor, Representative and Service Center in WA, OR, ID, MT and AK



LIQUID RINGS



ROTARY PISTONS



ROTARY VANES & CLAW PUMPS



DRY SCREWS



PD BLOWERS & VACUUM BOOSTERS



ACCESSORIES & CONTROLS



BLOWER PACKAGES



ENGINEERED PACKAGES

KINNEY® VACUUM PUMPS: Liquid Rings (1 & 2 Stage), Rotary Pistons (1 & 2 Stage), Rotary Vanes, Claw Pumps, Dry Screws and Vacuum Boosters.
M-D PNEUMATICS® AIR & GAS BLOWERS: Rotary Positive Displacement Blowers.



Titan Pump Distributor and Representative in WA, OR, ID, MT and AK



ANSI PUMPS



TRASH PUMPS



ROTARY GEAR PUMPS



AODD PUMPS



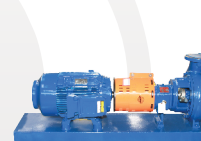
PROGRESSIVE CAVITY PUMPS



CENTRIFUGAL PUMPS



VERTICAL PUMPS



ENGINEERED PACKAGES

ANSI Pumps, Self-Priming Trash Pumps Gorman Rupp® Style, Close Coupled End Suction Centrifugal Pumps, Rotary Gear Pumps Viking® Style, Air Operated Diaphragm Pumps Wilden® Style, Progressive Cavity Pumps Moyno® Style, Vertical Turbine Pumps and Vertical In-Line Pumps.

Disclaimer: Gorman Rupp®, Viking®, Wilden®, Moyno® & Warman® are registered trademarks. Titan Manufacturing is not affiliated with these companies. Names used for reference purpose only.



NWFLOWTECH.COM

