

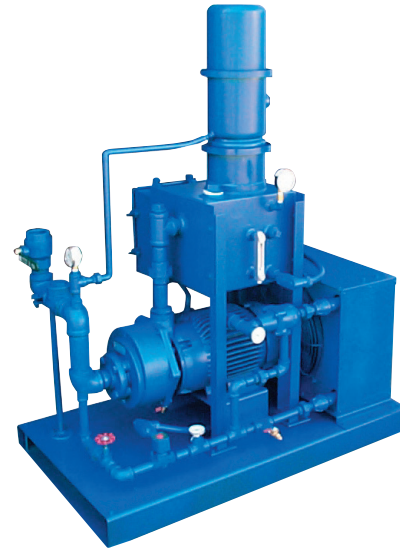
AF OSR SYSTEMS

Models

OSR-75 OSR-100 OSR-130

Features

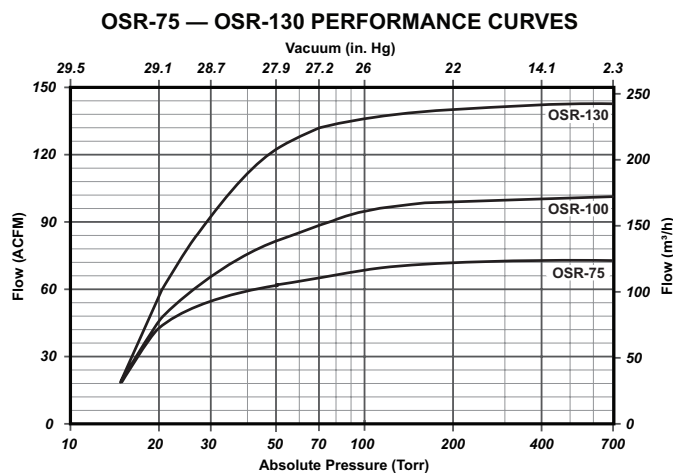
- Fluid-Vac “abuser-friendly” axial flow design
- Totally self contained package. No external sealant or cooling liquid is required.
- Close coupled compact design. No couplings to align or coupling guards to maintain.
- Robust industrial pump and motor provides years of trouble-free operation.
- High efficiency separator minimizes oil carryover.
- Fully instrumented system includes temperature gauges and inlet vacuum gauge.
- Quiet, vibration-free operation
- Inlet check valve prevents backflow when system is taken off line.



Specifications

	MODEL	OSR-75	OSR-100	OSR-130
Nominal Flow Capacity	CFM / <i>m³/h</i>	75 / <i>127</i>	100 / <i>170</i>	150 / <i>255</i>
Motor	HP / <i>kW</i>	7.5 / <i>5.5</i>	10 / <i>7.5</i>	15 / <i>11</i>
Pump RPM	RPM	1750	1750	1750
Oil Capacity	Gallons / <i>Liters</i>	4 / <i>15</i>	4 / <i>15</i>	6 / <i>23</i>
Weight	lbs. / <i>kg</i>	700 / <i>320</i>	750 / <i>340</i>	850 / <i>390</i>

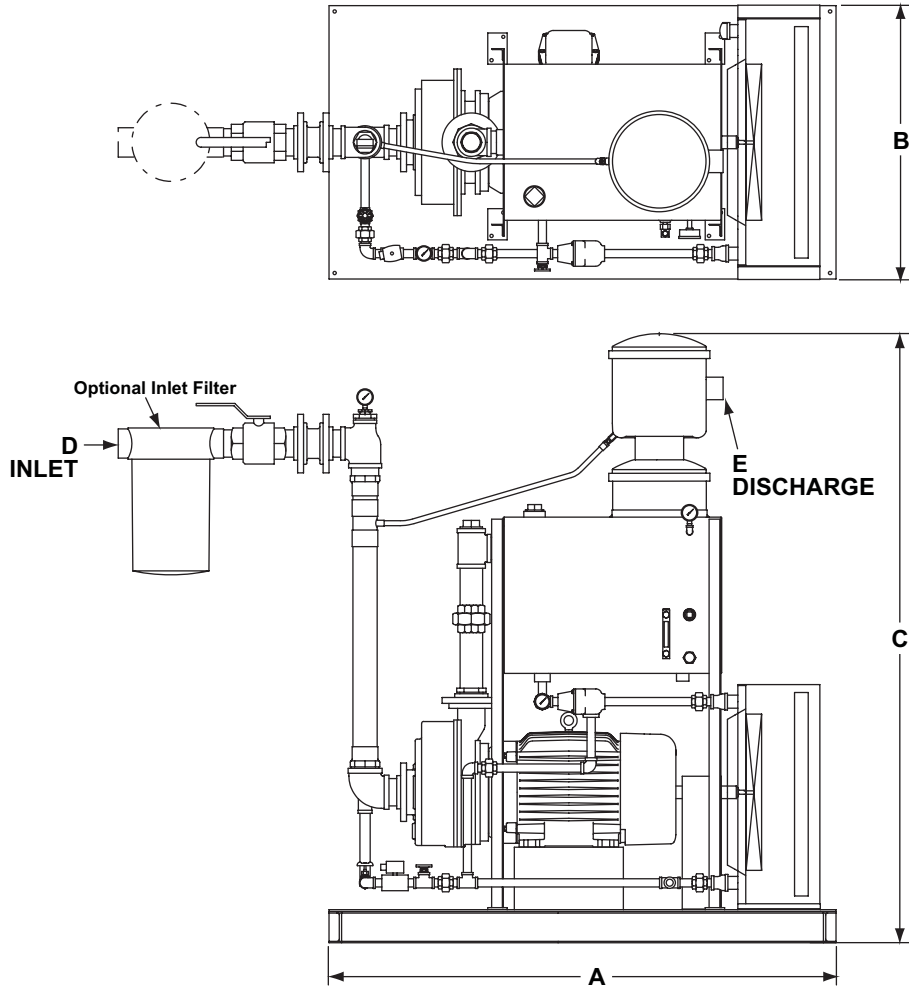
Typical Pumping Speed Curves



Dimensions

Values shown are approximate and should not be used for construction.
 Certified drawings are available through your local Kinney Sales Professional.

Models OSR-75, OSR-100, OSR-130



MODEL inches / mm	A	B	C	D Inlet	E Discharge	Weight (lbs. / kg)
OSR-75	52 / 1321	29 / 737	58 / 1473	2" NPT	2" NPT	700 / 320
OSR-100	52 / 1321	29 / 737	58 / 1473	2" NPT	2" NPT	750 / 340
OSR-130	52 / 1321	29 / 737	58 / 1473	2" NPT	2" NPT	850 / 390

CONTACT US

For more information, contact your
 Regional Sales Manager or call us at:

1-800-825-6937

Your Local Sales Professional:



Connect with us online:

www.nwflowtech.com
info@nwflowtech.com

Northwest Flow Technologies | Engineering Services

W. Washington: (253) 740-0530 | E. Washington: (509) 949-3368

Idaho & Montana: (208) 360-3833 | Oregon: (503) 708-9609