

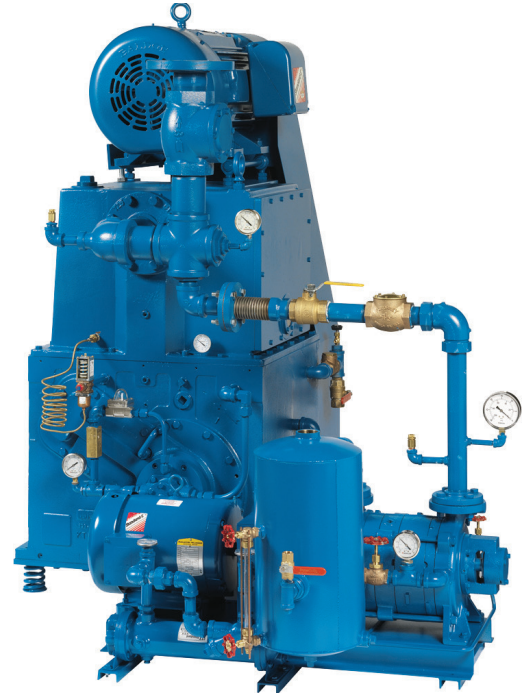
Vapor Handling Systems

Models: KT-150 / KLRC-75 KT-300 / KLRC-75
 KT-500 / KLRC-75 KT-850 / KLRC-125

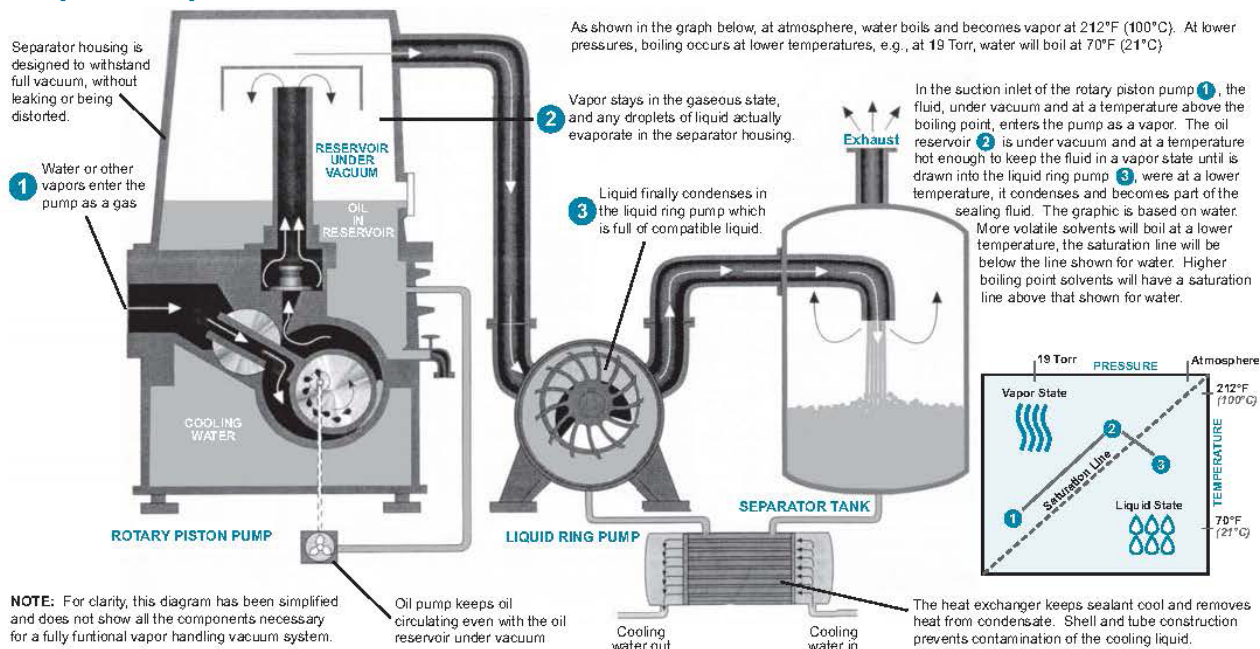
Kinney Vapor Handling Vacuum Systems are the cost-effective solution to vapor handling in any wet process requiring high vacuums. Vapor Handling Systems prevent vapors from condensing in the rotary piston pump. The oil reservoir of the KT pump is designed to withstand the pressure differential of continuous vacuum, and the oil pump assures a positive flow of oil, even when the reservoir is under vacuum.

Features

- More pumping speed at low pressure
- Maintain lower pressures on wet processes
- Eliminate loss of performance due to contaminated oil
- Greatly reduce oil consumption and need for oil changing
- Improve process quality and reliability - no downtime
- Keeps contaminants in the vapor state, thereby reducing corrosion on metal surfaces
- Provide savings both on initial cost and operating expense as compared to once through oil-lubricated vacuum pumps

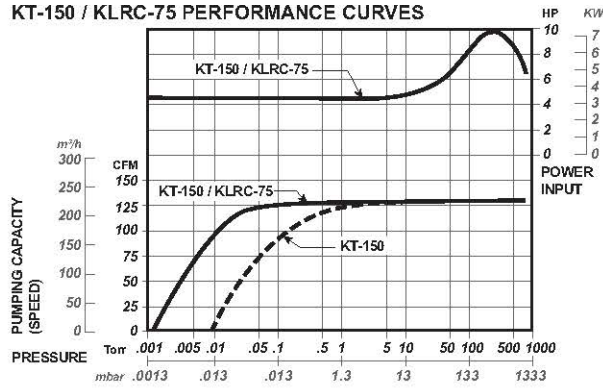


Principle of Operation

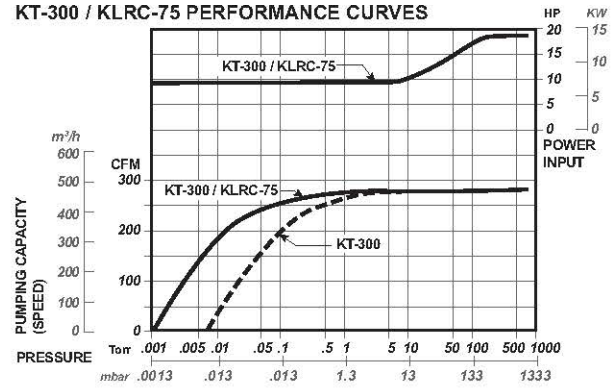


Typical Pumping Speed Curves

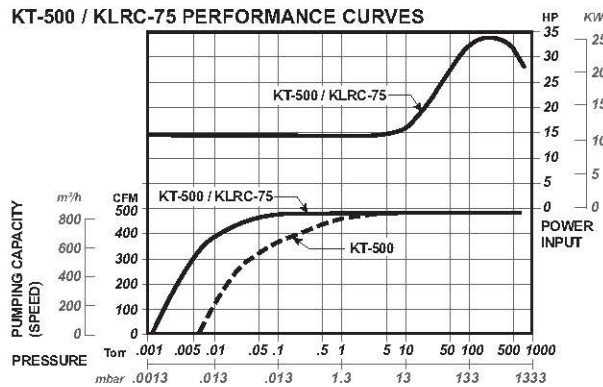
KT-150 / KLRC-75 PERFORMANCE CURVES



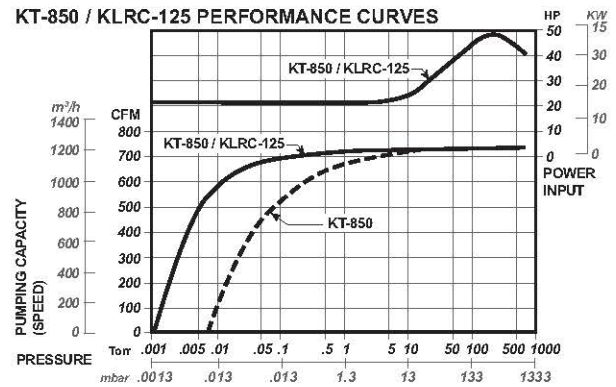
KT-300 / KLRC-75 PERFORMANCE CURVES



KT-500 / KLRC-75 PERFORMANCE CURVES



KT-850 / KLRC-125 PERFORMANCE CURVES



Specifications

MODEL		KT-150 / KLRC-75		KT-300 / KLRC-75		KT-500 / KLRC-75		KT-850 / KLRC-125	
		KT-150	KLRC-75	KT-300	KLRC-75	KT-500	KLRC-75	KT-850	KLRC-125
Rotational Speed RPM	RPM	1055	1750	875	1750	765	1750	615	1750
Recommended Motor	HP / kW	7.5 / 5.6	5 / 3.75	15 / 11.25	5 / 3.75	30 / 22.5	5 / 3.75	40 / 30	10 / 7.5
Water Flow Rate @ 60°F (16°C)	GPM / L/M	1 / 4	10 / 38	2 / 8	10 / 38	3 / 11	10 / 38	5 / 19	14 / 53
Net Weight	LBS / kg	775 / 352	260 / 118	1475 / 669	250 / 118	2625 / 1191	285 / 130	4175 / 1897	485 / 220
Drive	Type	V-Belt	Dired	V-Belt	Direct	V-Belt	Dired	V-Belt	Direct
Inlet Water Connection	NPT	1/4"	1/2"	3/8"	1/2"	3/8"	1/2"	3/8"	3/4"
Outlet Water Connection	NPT	3/8"	—	1/2"	—	1/2"	—	1/2"	—
KT Inlet/KLRC Discharge Flange Conn.	ANSI	3"	1 1/2"	4"	1 1/2"	6"	1 1/2"	8"	1 1/2"
Interstage Blowoff Valve Connection	NPT	2"		3"		3"		4"	

CONTACT US

For more information, contact your Regional Sales Manager or call us at:

1-800-825-6937

Your Local Sales Professional:



Connect with us online:

www.nwflowtech.com
info@nwflowtech.com

Northwest Flow Technologies | Engineering Services

W. Washington: (253) 740-0530 | E. Washington: (509) 949-3368

Idaho & Montana: (208) 360-3833 | Oregon: (503) 708-9609