

**Corporate Office**  
21850 88<sup>th</sup> Place South  
Kent, WA 98031

**Idaho Office**  
62W 465 N, #3  
Blackfoot, ID 83221



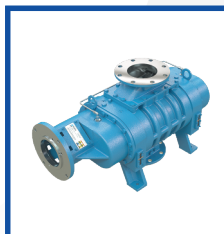
**Locations**  
Western Washington: (253) 740-0530  
Eastern Washington: (509) 949-3368  
Oregon, Idaho & Montana: (208) 360-3833  
Email: [info@nwflowtech.com](mailto:info@nwflowtech.com)

## ***The Northwest's Flow Technology Experts providing engineering services since 1997***

Northwest Flow Technologies, a Division of Northwest Industrial Repair, Inc., provides engineering services to customers in a range of industries including Food & Beverage, Chemical, Plastics, Power & Energy, Mining, Aerospace, Water & Wastewater, Pharmaceutical, Metallurgy and more. Northwest Flow Technologies collaborates with the customer in understanding their process needs before moving forward to determine the optimal solution and package design whether it is a standard blower package or a custom package that meets the application operating parameters and project budget requirements.

### ***General Service Offering***

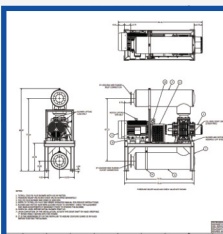
- Equipment Sizing & Selection
- New Equipment Sales
- Accessories and Controls
- Technical Support
- Application Engineering
- System Engineering
- Custom Engineered Packages
- Welding & Fabrication
- Installation & Commissioning Support
- 3D CAD Engineering Software
- 2D CAD Drawings



NEW EQUIPMENT



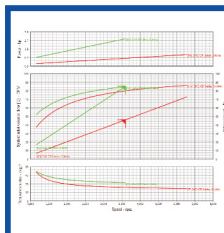
3D CAD SOFTWARE



2D CAD DRAWINGS



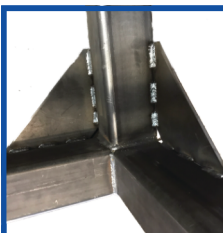
CUSTOM PACKAGES



EQUIPMENT SIZING



FABRICATION



WELDING



COMMISSIONING

### ***Package Accessories***

- Inlet and Discharge Silencers
- Inlet Air Filters
- Filter Restriction Gauges
- Pressure Relief Valves
- Vacuum Relief Valves
- Check Valves
- Temperature Gauges
- Pressure Gauges
- Vacuum Gauges
- V-Belt Drive or Direct Drive
- V-Belt Guards
- Coupling Guards
- VFD Drives
- Combination Starter Control Panels
- AC Motors

### **M-D Pneumatics® KINNEY®**

**Authorized M-D Pneumatics® & KINNEY® Distributor, Representative and Service Center in WA, OR, ID, MT and AK**



LIQUID RINGS



ROTARY PISTONS



ROTARY VANES & CLAW PUMPS



DRY SCREWS



PD BLOWERS & VACUUM BOOSTERS



ACCESSORIES & CONTROLS



BLOWER PACKAGES



ENGINEERED PACKAGES

KINNEY® VACUUM PUMPS: Liquid Rings (1 & 2 Stage), Rotary Pistons (1 & 2 Stage), Rotary Vanes, Claw Pumps, Dry Screws and Vacuum Boosters.  
M-D PNEUMATICS® AIR & GAS BLOWERS: Rotary Positive Displacement Blowers.



**Titan Pump Distributor and Representative in WA, OR, ID, MT and AK**



ANSI PUMPS



TRASH PUMPS



ROTARY GEAR PUMPS



AODD PUMPS



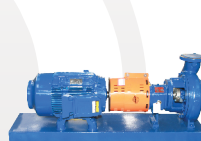
PROGRESSIVE CAVITY PUMPS



CENTRIFUGAL PUMPS



VERTICAL PUMPS



ENGINEERED PACKAGES

ANSI Pumps, Self-Priming Trash Pumps Gorman Rupp® Style, Close Coupled End Suction Centrifugal Pumps, Rotary Gear Pumps Viking® Style, Air Operated Diaphragm Pumps Wilden® Style, Progressive Cavity Pumps Moyno® Style, Vertical Turbine Pumps and Vertical In-Line Pumps.

Disclaimer: Gorman Rupp®, Viking®, Wilden®, Moyno® & Warman® are registered trademarks. Titan Manufacturing is not affiliated with these companies. Names used for reference purpose only.



**NWFLOWTECH.COM**

