

## Model KLRC-125

### Features

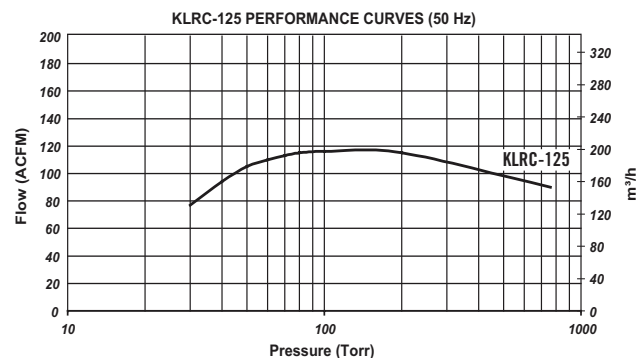
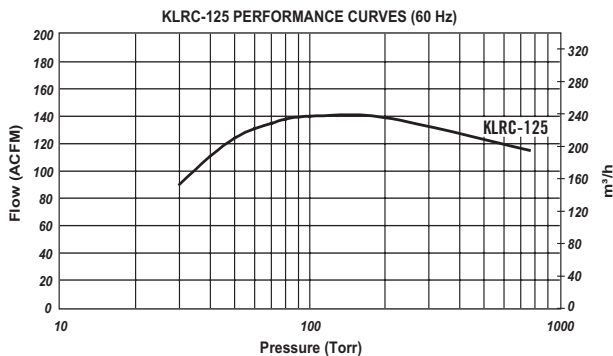
- Impellers positively locked to shaft
- Reliable mechanical seals for high-integrity sealing and low shaft friction
- Center-anchored tie rods allow access to either end of the pump without total disassembly
- Precision casting and CNC machining eliminates the need for body gasketing (process dependent)
- Replaceable end plates
- Clearance adjustments via shims
- Made in the USA



| KLRC - 125 Material & Seal Code                   |   |   |
|---|---|---|
| KLRC - 125 XY                                     | X | Material code                                     |
|   | Y | Mechanical seal code                              |
| Material Code (X)                                 | F | Cast iron casings, SS316L impellers & SS316 shaft |
|   | C | All wetted parts SS316L & SS316 shaft             |
| Mechanical Seal Code (Y)                          | A | John Crane Type 21 Carbon/Ceramic/Viton           |
|   | D | Flowserve Type RO Carbon/Durchrome/Viton.         |
|   | L | PTFE encapsulated Viton O-Rings                   |
| Consult factory for alternate seal configurations |   |   |

| Specifications                        | KLRC-125                |          |
|---------------------------------------|-------------------------|----------|
|                                       | 60 Hz                   | 50 Hz    |
| Motor Power                           | 10 HP                   | 7.5 KW   |
| Pump Speed                            | 1750 RPM                | 1450 RPM |
| Seal Water Flow                       | 7 GPM                   |          |
| Noise Level                           | 74 dBA @ 60 Torr (3 ft) |          |
| Maximum Allowable Suction Temperature | 220° F (Hot Pump)       |          |

## Typical Pumping Speed Curves



- 1.) Above performance data based on 68° F inlet air with 50% relative humidity and using water as a sealant at 60° F.
- 2.) All SS pump capacity less 10%

## Dimensions

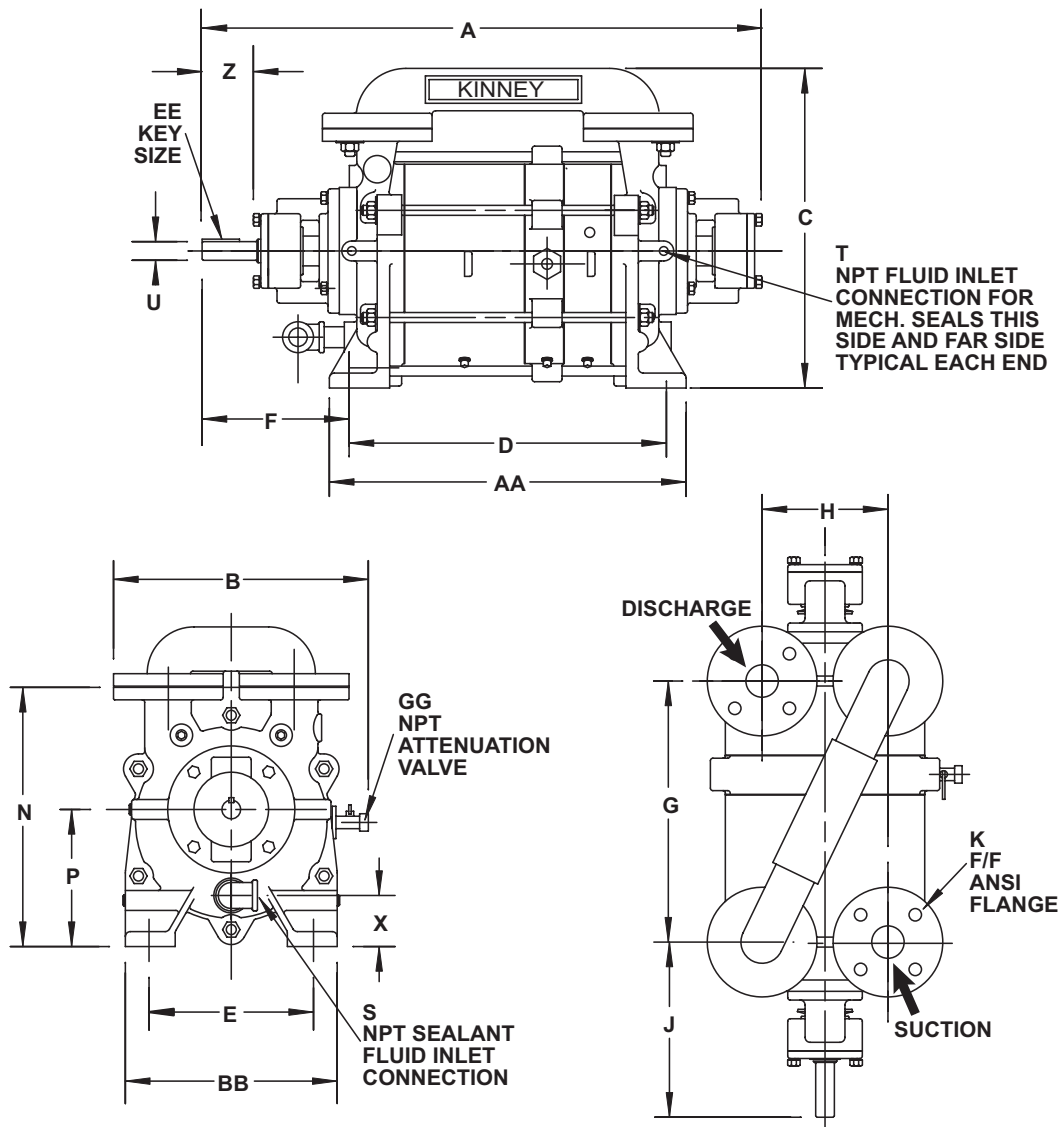
Values shown are approximate and should not be used for construction.

Certified drawings are available through your local Tuthill Vacuum & Blower Systems Sales Professional.

## Bare Shaft Pump

Models: KLRC-125

PUMP ROTATION CLOCKWISE  
FACING PUMP SHAFT

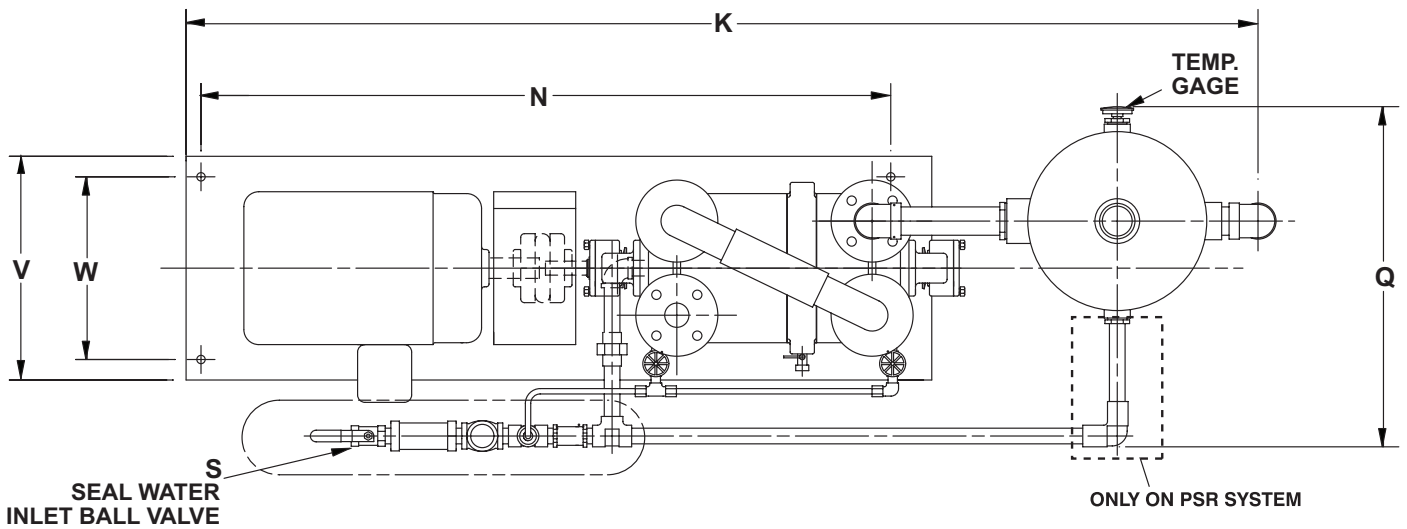
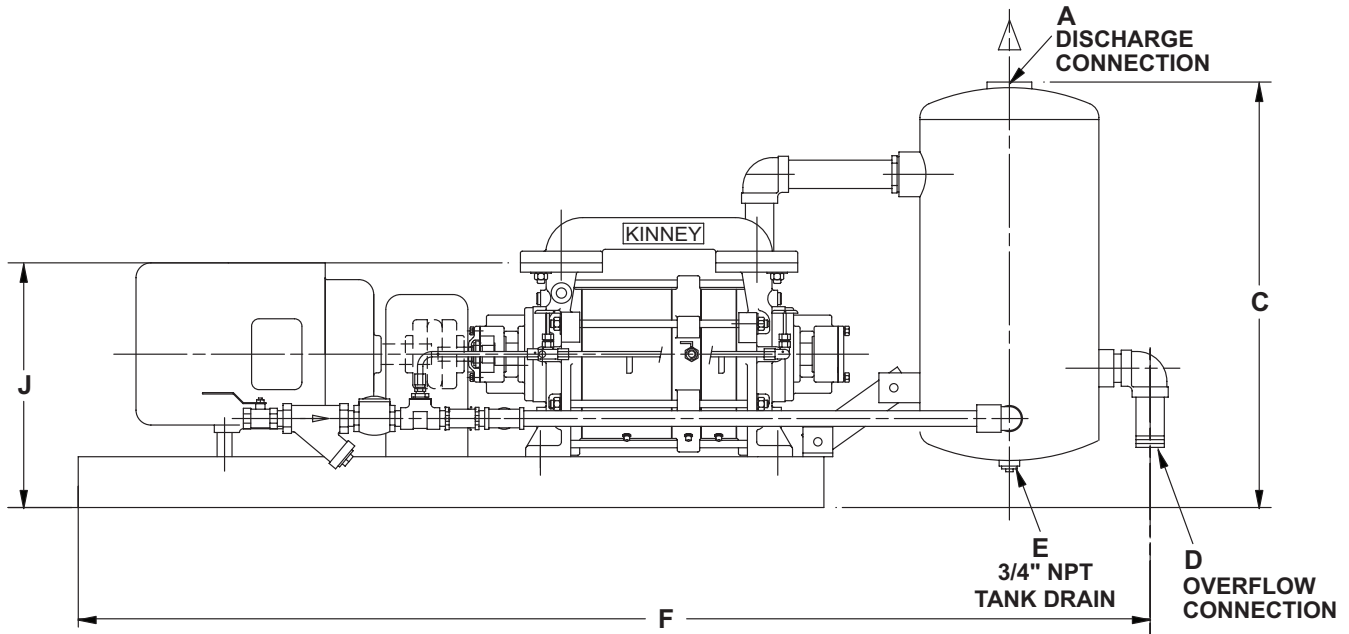


| in<br>mm | A              | B             | C         | D               | E            | F        | G             | H             | J              | K           | N         |
|----------|----------------|---------------|-----------|-----------------|--------------|----------|---------------|---------------|----------------|-------------|-----------|
| KLRC-125 | 28 1/16<br>718 | 12 3/4<br>324 | 16<br>406 | 15 15/16<br>404 | 8 1/4<br>210 | 7<br>178 | 13 1/8<br>333 | 6 5/16<br>160 | 8 13/32<br>214 | 1 1/2" ANSI | 13<br>330 |

| in<br>mm | P            | S    | T        | U      | X            | Z           | AA            | BB            | EE | GG       | APPROX.<br>WEIGHT<br>LBS / kg |
|----------|--------------|------|----------|--------|--------------|-------------|---------------|---------------|----|----------|-------------------------------|
| KLRC-125 | 6 7/8<br>175 | 3/4" | 1/4 NPTF | 15/16" | 2 9/16<br>65 | 2 1/8<br>54 | 17 7/8<br>454 | 10 5/8<br>270 |    | 1/4 NPTF | 255 / 116                     |

# NSR (No Sealant Recovery) & PSR (Partial Sealant Recovery) System

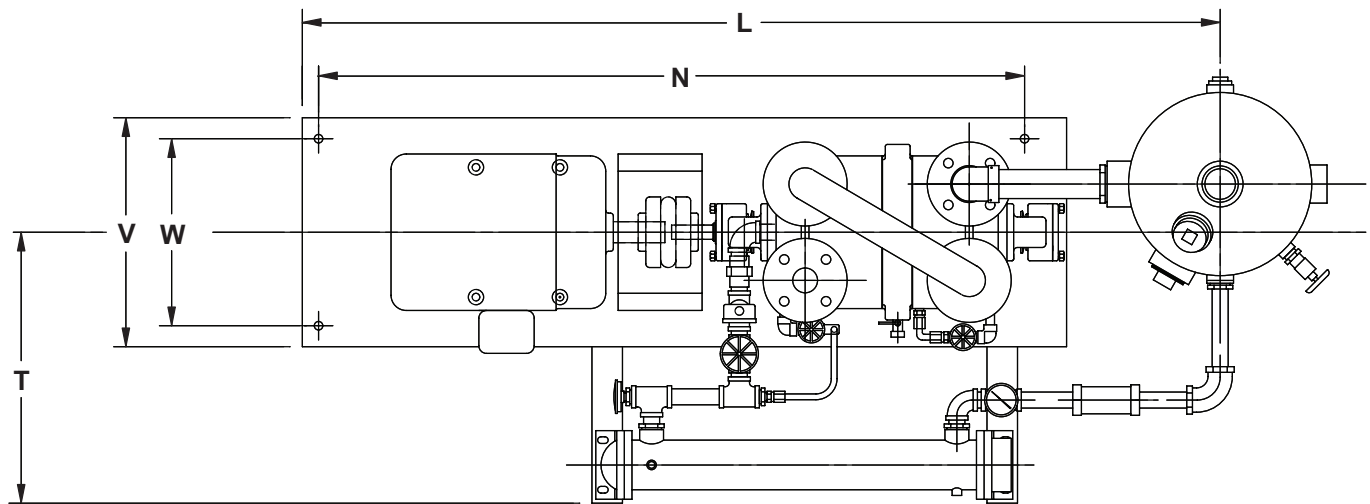
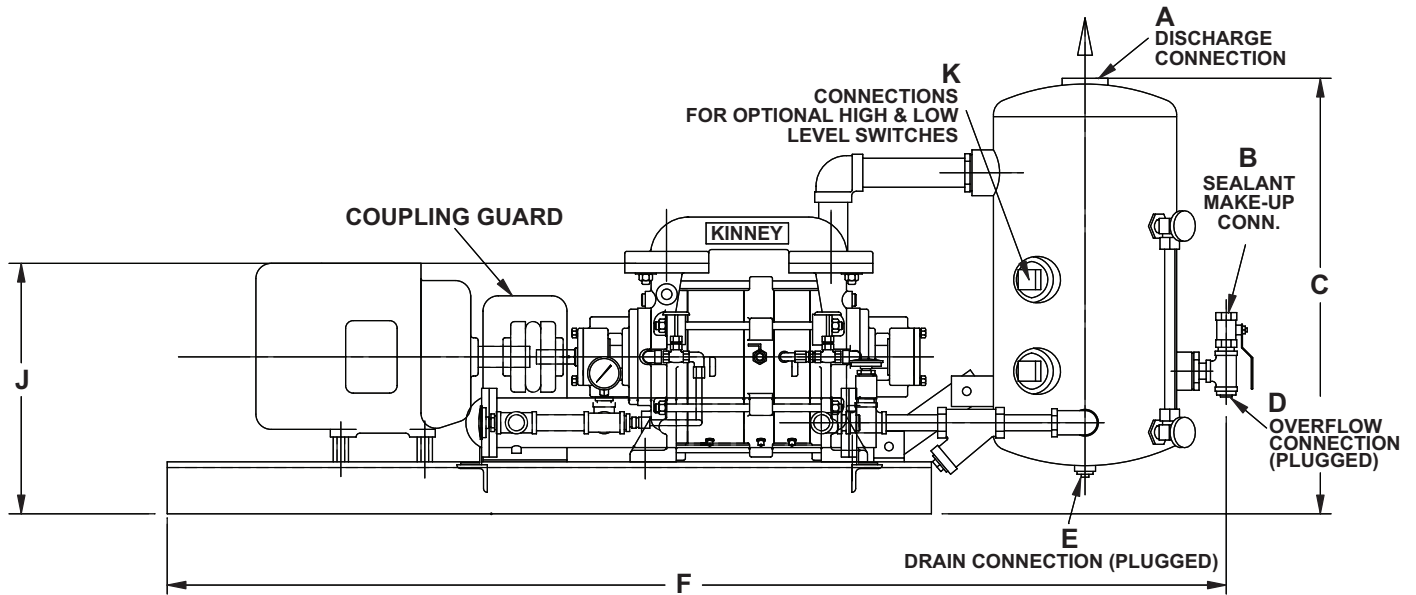
Models: KLRC-125



| in<br>mm | A         | C             | D             | E           | F              | J             | K              | N              | Q             | S           | V         | W             | APPROX.<br>WEIGHT<br>LBS / kg |
|----------|-----------|---------------|---------------|-------------|----------------|---------------|----------------|----------------|---------------|-------------|-----------|---------------|-------------------------------|
| KLRC-125 | 2"<br>NPT | 28 1/2<br>724 | 1 1/2"<br>NPT | 3/4"<br>NPT | 71 7/8<br>1826 | 16 3/8<br>416 | 71 7/8<br>1826 | 46 1/4<br>1175 | 22 3/4<br>578 | 3/4"<br>NPT | 15<br>381 | 12 1/4<br>451 | 750<br>340                    |

# FSR (Full Sealant Recovery) System

Models: KLRC-125



| in<br>mm | A         | B           | C             | D           | E           | F              | J             | K             | L              | N              | T             | V         | W             | APPROX.<br>WEIGHT<br>LBS / kg |
|----------|-----------|-------------|---------------|-------------|-------------|----------------|---------------|---------------|----------------|----------------|---------------|-----------|---------------|-------------------------------|
| KLRC-125 | 2"<br>NPT | 3/4"<br>NPT | 28 1/2<br>724 | 3/4"<br>NPT | 3/4"<br>NPT | 71 3/4<br>1823 | 16 3/8<br>416 | (2)<br>2" NPT | 62 1/2<br>1588 | 46 1/4<br>1175 | 17 3/4<br>451 | 15<br>381 | 12 1/4<br>311 | 798<br>362                    |

Your Local Tuthill Vacuum Blower Systems Sales Professional:



**Northwest  
FLOW TECHNOLOGIES**  
 Western Washington: 253-740-0530  
 Eastern Washington: 509-949-3368  
 Idaho & Montana: 208-360-3833  
 Oregon: 503-708-9609  
[info@nwflowtech.com](mailto:info@nwflowtech.com)



**Tuthill Vacuum & Blower Systems**  
 4840 West Kearney Street  
 Springfield, Missouri USA 65803-8702  
 o 417.865.8715 800.825.6937 f 417.865.2950  
[tuthillvacuumblower.com](http://tuthillvacuumblower.com)

