

# END-SUCTION CENTRIFUGAL PUMPS

Series: IA

2 - 125 HP / 1750 & 3500 RPM

Suction: 1½" - 8" NPT or flange

Discharge: 1" - 6" NPT or flange



## APPLICATIONS

- ▶ Booster systems
- ▶ Water transfer
- ▶ Chilled water system
- ▶ High flow-rate / medium pressure

## VOLUTE

Cast iron ASTM A-48 class 30.

## INTERMEDIATE COUPLING

Cast iron ASTM A-48 class 30.

## IMPELLER

- ▶ Cast iron ASTM A-48 class 30
- ▶ Dynamically balanced

## SEAL

**Design:** mechanical, type 01.

**Material:** Ceramic stationary part, carbon ring seal and exclusion in the rotating part. Buna-N elastomer and stainless steel spring.

## SHAFT SLEEVE

Stainless steel.

## O-RINGS

Buna-N.

## MOTOR

High quality premium efficiency TEFC or ODP electric motors, designed & developed in accordance with industry standards for industrial and commercial pumping applications.

- ▶ 1 & 3 phases, 60 Hz
- ▶ Rated output: 2 to 125 HP
- ▶ 1750 & 3500 RPM
- ▶ Frame sizes: 182 JM to 405 JM

## HARDWARE

Carbon steel.

## PAINT

Air dry enamel, water based.

## End Suction Centrifugal Close Coupled Pumps (provided with ODP Premium Efficiency motors)

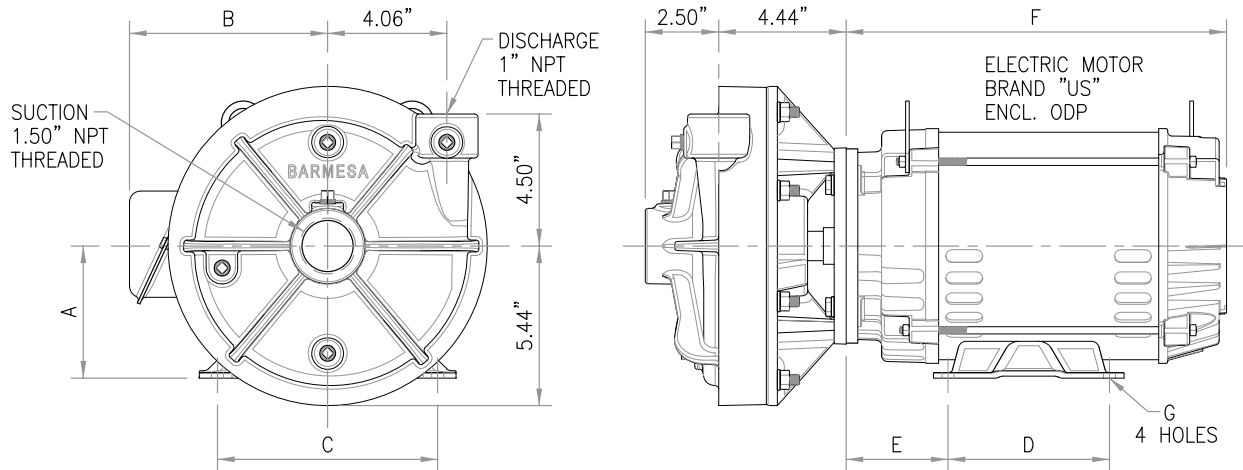
Model	Size	HP	Phase
IA1	1½" x 1" x 7"	2 to 7.5	1 & 3
IA1½	2" x 1½" x 9"	5 to 20	1 & 3
IA1½H	2" x 1½" x 9"	3 to 30	3
IA1½XH	2" x 1½" x 9"	3 to 30	3
IA2	2½" x 2" x 9"	2 to 30	3
IA2H	2½" x 2" x 9"	25 & 30	3
IA2EH	3" x 2" x 9"	5 to 50	3
IA2EXH	3" x 2" x 10"	7.5 to 60	3
IA2HH	3" x 2" x 10"	30 & 40	3
IA2½	3" x 2½" x 9"	3 to 40	3
IA2½H	4" x 2½" x 9"	40 to 100	3
IA2½BJM	4" x 2½" x 13"	15 to 30	3
IA3	4" x 3" x 9"	3 to 50	3
IA3H	4" x 3" x 9"	30 to 75	3
IA3BJM	4" x 3" x 13½"	15 to 40	3
IA4	6" x 4" x 10"	5 to 125	3
IA4BJH	6" x 4" x 13"	20 to 75	3
IA6BJM	8" x 6" x 13"	30 to 75	3

For dimensions and weights please contact factory.

### IMPORTANT!

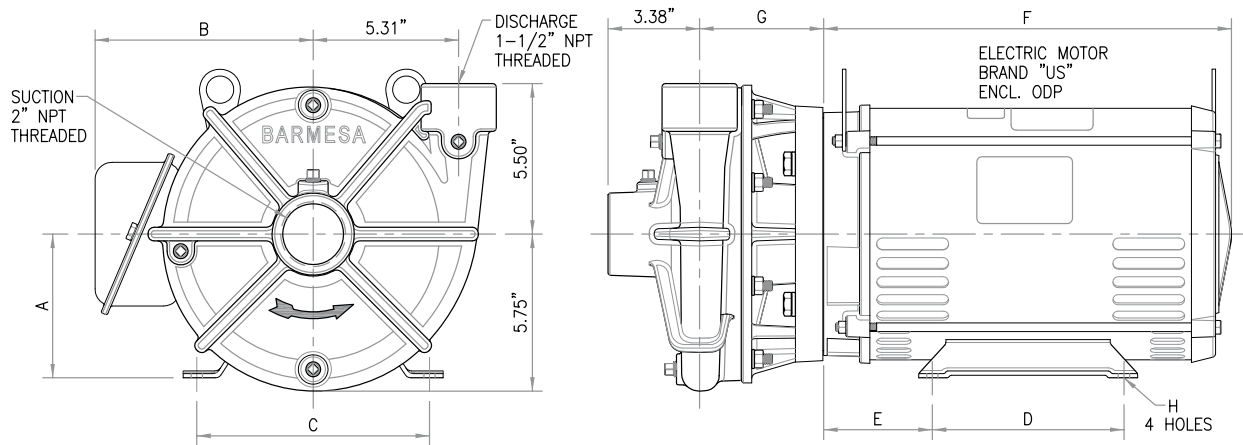
1. Never use this pump to handle explosive liquids.
2. This pump is not approved to be used in swimming pools, recreational installations or any application where human contact may be common.

## HIGH PRESSURE CENTRIFUGAL PUMP MODEL IA1, GENERAL DIMENSIONS



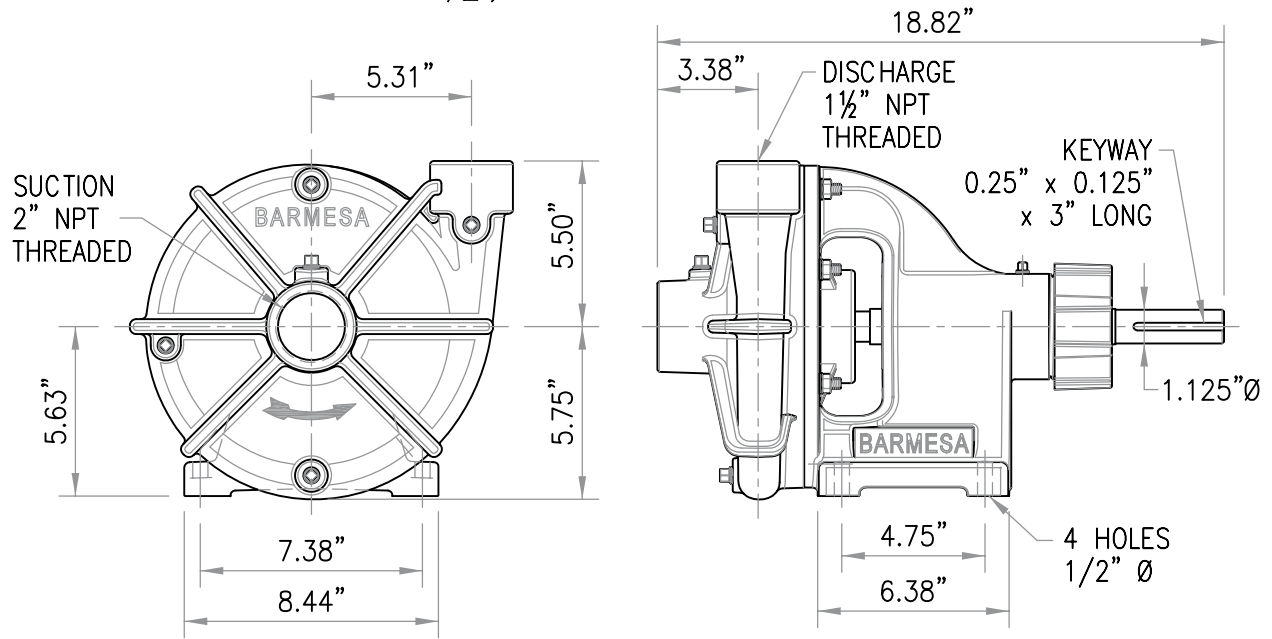
MODEL	HP	RPM	PHASE	FRAME	A	B	C	D	E	F	G
IA1-2-4	2	1735	3	145JM	3.5"		5.5"	5"	2.75"	12"	0.34"
IA1-3-2	3	3510	3	182JM	4.5"	6.88"	7.5"	4.5"	3.63"	11.81"	0.41"
IA1-5-2	5	3490	3	184JM				5.5"	4.25"	13.5"	0.41"
IA1-7.5-2	7.5	3515	3	213JM	5.25"	7.6"	8.5"				

## HIGH PRESSURE CENTRIFUGAL PUMP MODEL IA1½ & IA1½H GENERAL DIMENSIONS



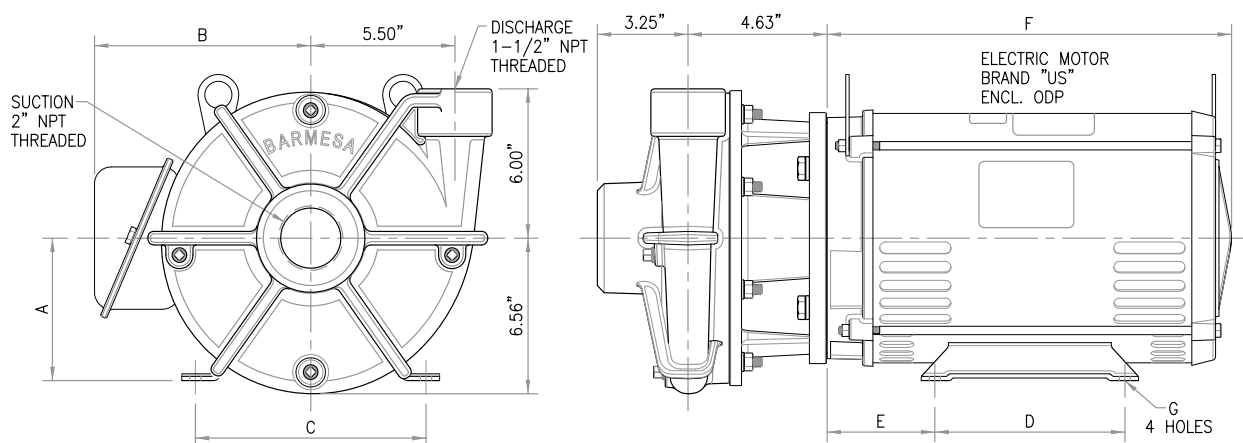
MODEL	HP	RPM	PHASE	FRAME	A	B	C	D	E	F	G	H
IA1½-5-2	5	3490	3	184JM	4.5"	6.88"	7.5"	5.5"	3.63"	11.81"	4.25"	0.41"
IA1½-7.5-2	7.5	3515	3	213JM	5.25"	7.6"	8.5"	7"	4.25"	13.25"		
IA1½-10-2	10	3505	3	215JM						14.75"		
IA1½-15-2	15	3530	3	254JM	6.25"	10"	10"	8.25"	4.5"	19.06"	4.54"	0.53"
IA1½-20-2	20	3525	3	256JM				10"		19.65"		
IA1½H-3-4	3	1740	3	182JM	4.5"	6.88"	7.5"	4.5"	3.63"	11.81"	4.25"	0.41"
IA1½H-15-2	15	3530	3	254JM	6.25"	10"	10"	8.25"	4.5"	19.06"	4.54"	
IA1½H-20-2	20	3525	3	256JM				10"		19.65"		
IA1½H-25-2	25	3525	3	284JM	7"	11.75"	11"	9.5"	4.75"	20.5"	5.18"	
IA1½H-30-2	30	3525	3	286JM				11"				

# HIGH PRESSURE CENTRIFUGAL PUMP MODEL IA1½, GENERAL DIMENSIONS



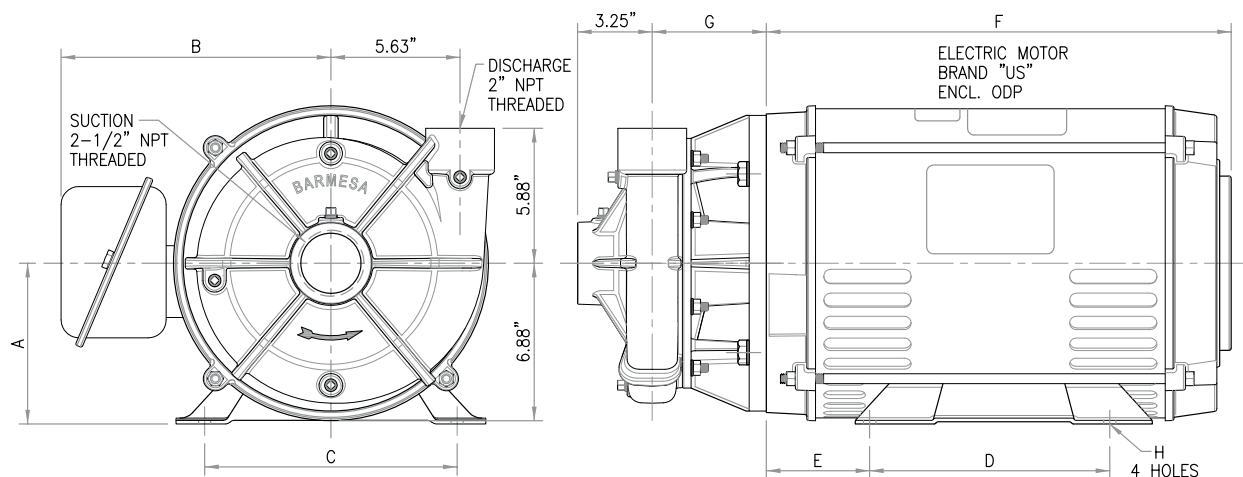
barmesapumps.com

## HIGH PRESSURE CENTRIFUGAL PUMP MODEL IA1½XH GENERAL DIMENSIONS



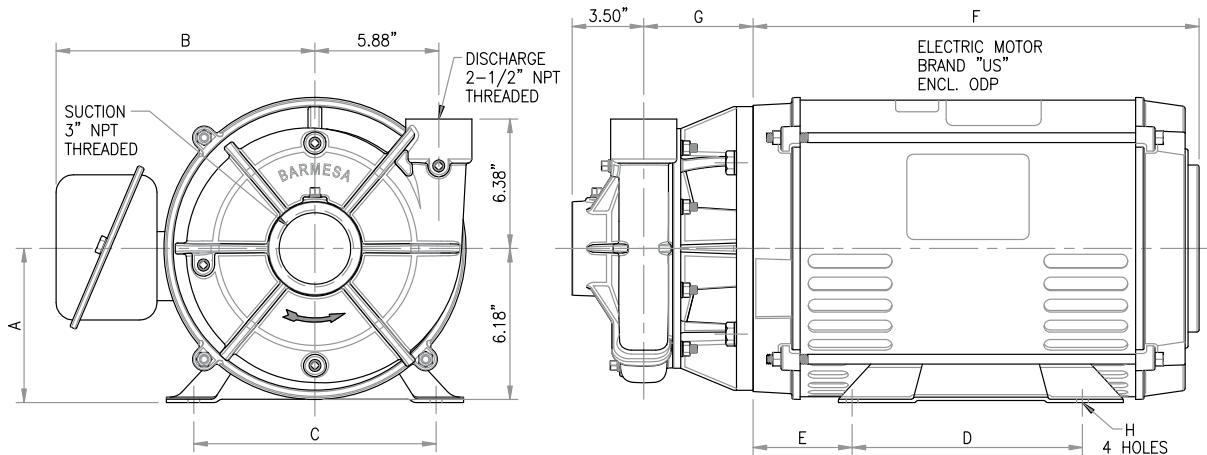
MODEL	HP	RPM	PHASE	FRAME	A	B	C	D	E	F	G
IA1½XH-3-4	3	1750	3	182JM	4.5"	6.88"	7.5"	4.5"	3.63"	11.81"	0.41"
IA1½XH-5-4	5	1730	3	184JM				5.5"			
IA1½XH-15-2	15	3530	3	254JM	6.25"	10"	10"	8.25"	4.5"	19.06"	0.53"
IA1½XH-20-2	20	3525	3	256JM				10"		19.65"	
IA1½XH-25-2	25	3525	3	284JM	7"	11.75"	11"	9.5"	4.75"	20.5"	

## HIGH PRESSURE CENTRIFUGAL PUMP MODELS IA2 & IA2H GENERAL DIMENSIONS



MODEL	HP	RPM	PHASE	FRAME	A	B	C	D	E	F	G	H
IA2-2-4	2	1735	3	145JM	3.5"	6.88"	5.5"	5"	2.75"	12"	4.03"	0.34"
IA2-10-2	10	3505	3	215JM	5.25"	7.6"	8.5"	7"	4.25"	14.75"	4.28"	0.41"
IA2-15-2	15	3530	3	254JM	6.25"	10"	10"	8.25"	4.5"	19.06"		
IA2-20-2	20	3525	3	256JM				10"		19.65"	4.03"	0.53"
IA2-25-2	25	3525	3	284JM				9.5"				
IA2-30-2	30	3525	3	286JM	7"	11.75"	11"	11"	4.75"	20.5"	5"	
IA2H-25-2	25	3525	3	284JM				9.5"				0.53"
IA2H-30-2	30	3525	3	286JM				11"				

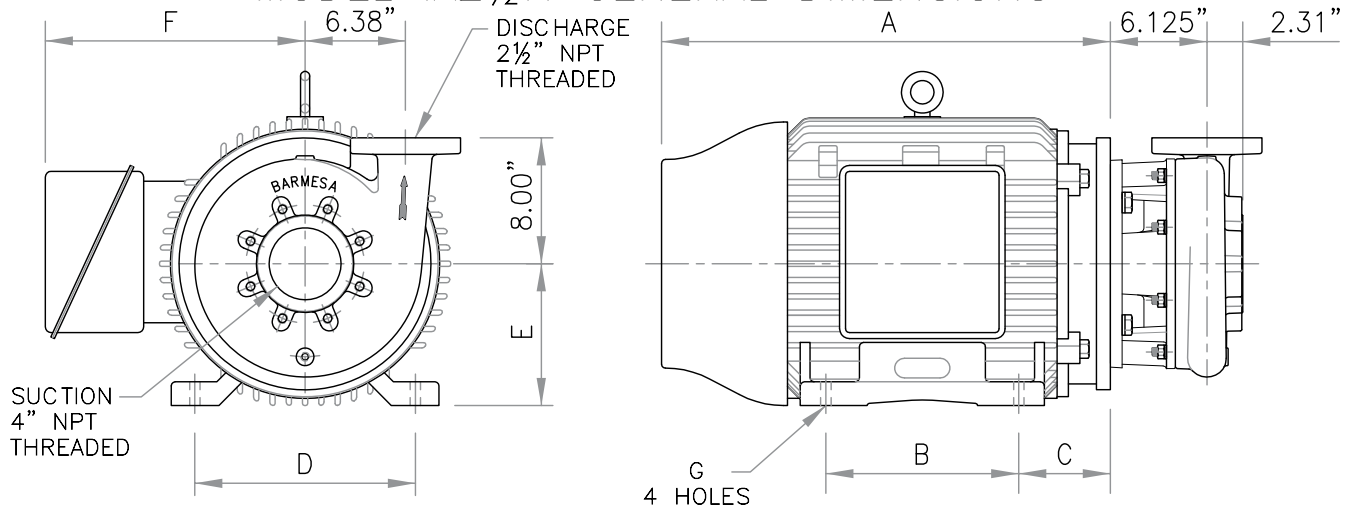
## HIGH PRESSURE CENTRIFUGAL PUMP MODEL IA2½ GENERAL DIMENSIONS



MODEL	HP	RPM	PHASE	FRAME	A	B	C	D	E	F	G	H
IA2½-3-4	3	1740	3	182JM	4.5"	6.88"	7.5"	4.5"	3.63"	11.81"	4.47"	0.41"
IA2½-5-4	5	1730	3	184JM				5.5"				
IA2½-10-2	10	3505	3	215JM	5.25"	7.6"	8.5"	7"	4.25"	15"	4.72"	0.53"
IA2½-15-2	15	3530	3	254JM	6.25"	10"	10"	8.25"	4.75"	19.31"		
IA2½-20-2	20	3525	3	256JM				10"			20.5"	5.44"
IA2½-25-2	25	3525	3	284JM	7"	11.75"	11"	9.5"				
IA2½-30-2	30	3525	3	286JM				11"				
IA2½-40-2	40	3530	3	324JM	8"	14.75"	12.5"	10.5"	5.25"	22.25"		0.69"

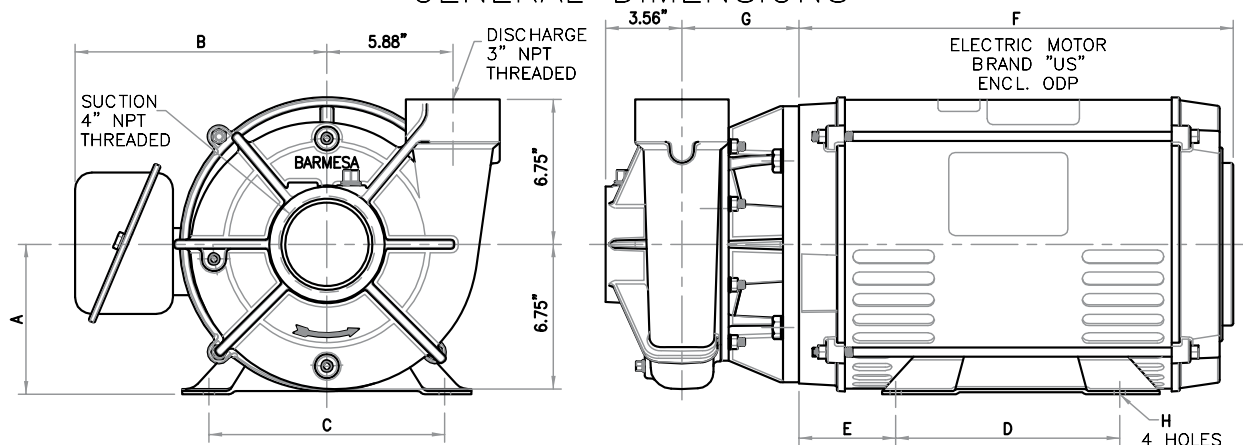
barmesapumps.com

## HIGH PRESSURE CENTRIFUGAL PUMP MODEL IA2½H GENERAL DIMENSIONS



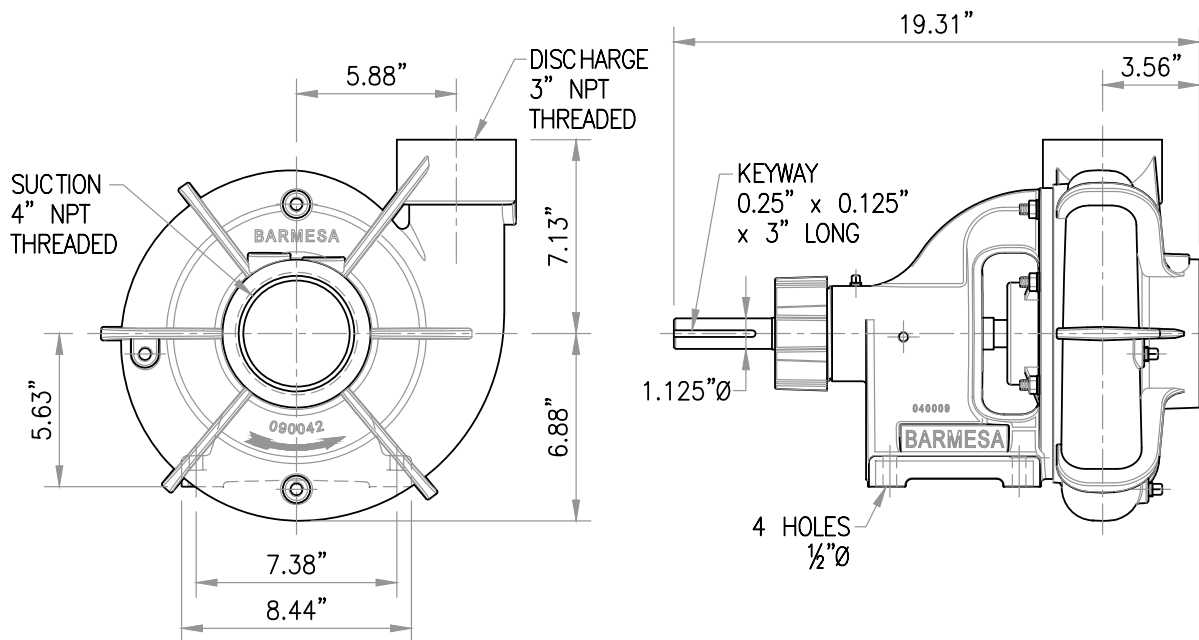
MODEL	HP	RPM	PHASE	FRAME	A	B	C	D	E	F	G
IA2½H-40-2	40	3600	3	324JM	24"	10.5"	5"	12.5"	8"	12"	0.66"
IA2½H-50-2	50	3600	3	326JM	25.52"	12"					
IA2½H-60-2	60	3600	3	364JM	28"	11.25"	5.75"	14"	9"	16.5"	0.66"
IA2½H-75-2	75	3600	3	365JM	29"	12.25"					
IA2½H-100-2	100	3600	3	405JM	32"	13.75"	5.75"	16"	10"	17.25"	0.81"

## HIGH PRESSURE CENTRIFUGAL PUMP MODEL IA3 & IA3H GENERAL DIMENSIONS

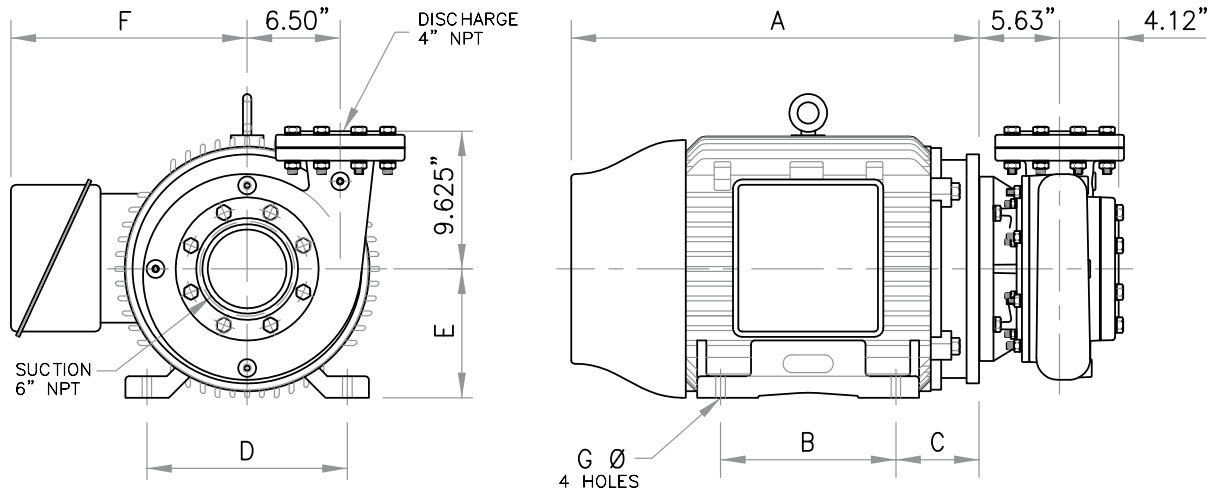


MODEL	HP	RPM	PHASE	FRAME	A	B	C	D	E	F	G	H
IA3-3-4	3	1740	3	182JM	4.5"	6.88"	7.5"	4.5"	3.63"	11.81"	4.53"	
IA3-5-4	5	1730	3	184JM				5.5"				0.41"
IA3-7.5-4	7.5	1750	3	213JM	5.25"	7.6"	8.5"		4.25"	13.5"	4.78"	
IA3-15-2	15	3530	3	254JM				8.25"		19.31"		
IA3-20-2	20	3525	3	256JM	6.25"	10"	10"	10"	4.75"	19.94"	5.53"	
IA3-25-2	25	3525	3	284JM				9.5"				0.53"
IA3-30-2	30	3525	3	286JM	7"	11.75"	11"	11"		20.5"		
IA3-40-2	40	3530	3	324JM				10.5"	5.25"	22.25"		0.69"
IA3-50-2	50	3530	3	326JM	8"	14.75"	12.5"	12"				
IA3H-30-2	30	3525	3	286JM	7"	11.75"	11"	11"	4.75"	20.5"		0.53"
IA3H-40-2	40	3530	3	324JM				10.5"				
IA3H-50-2	50	3530	3	326JM	8"	14.75"	12.5"	12"	5.25"	22.25"	5.46"	
IA3H-60-2	60	3565	3	364JM				11.25"	5.88"	23"		0.69"
IA3H-75-2	75	3565	3	365JM	9"	16.31"	14"	12.25"		24"		

## HIGH PRESSURE CENTRIFUGAL PUMP MODEL IA3U GENERAL DIMENSIONS



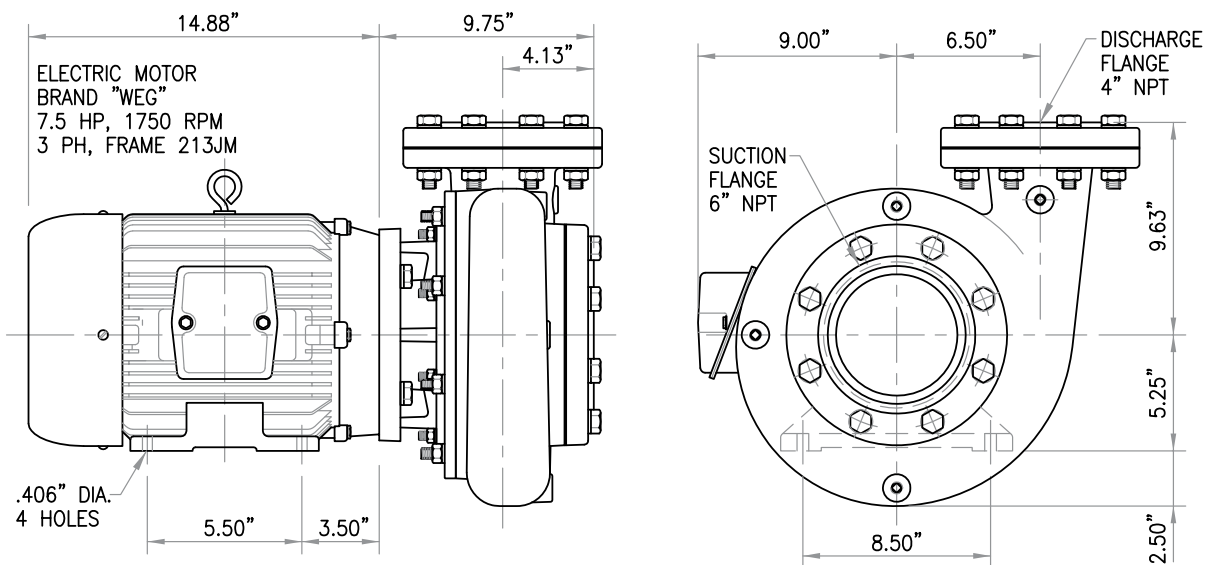
## HIGH PRESSURE CENTRIFUGAL PUMP MODEL IA4 GENERAL DIMENSIONS



MODEL	HP	RPM	PHASE	FRAME	A	B	C	D	E	F	G
IA4-40-2	40	3530	3	324TSC	24"	10.5"	5"	12.5"	8"	12"	0.66"
IA4-50-2	50	3530	3	326TSC	25.5"	12"		12.5"	8"	12"	0.66"
IA4-60-2	60	3565	3	364TSC	28"	11.25"	5.75"	14"	9"	16.5"	0.66"
IA4-75-2	75	3555	3	365TSC	29"	12.25"	6.38"	16"	10"	18.75"	0.81"
IA4-100-2	100	3560	3	405TSC	30.5"	13.75"		16"	10"		
IA4-125-2	125	3570	3	444TSC	37.75"	14.5"	8.75"	18"	11"		

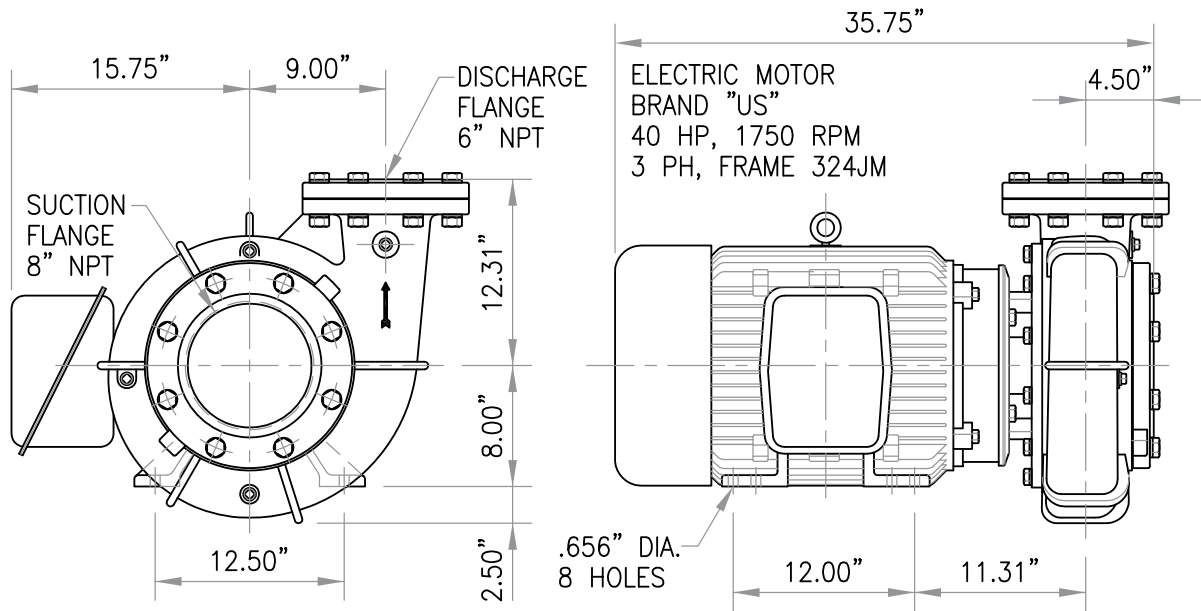
barmesapumps.com

## CENTRIFUGAL PUMP IA4-7.5-4 GENERAL DIMENSIONS



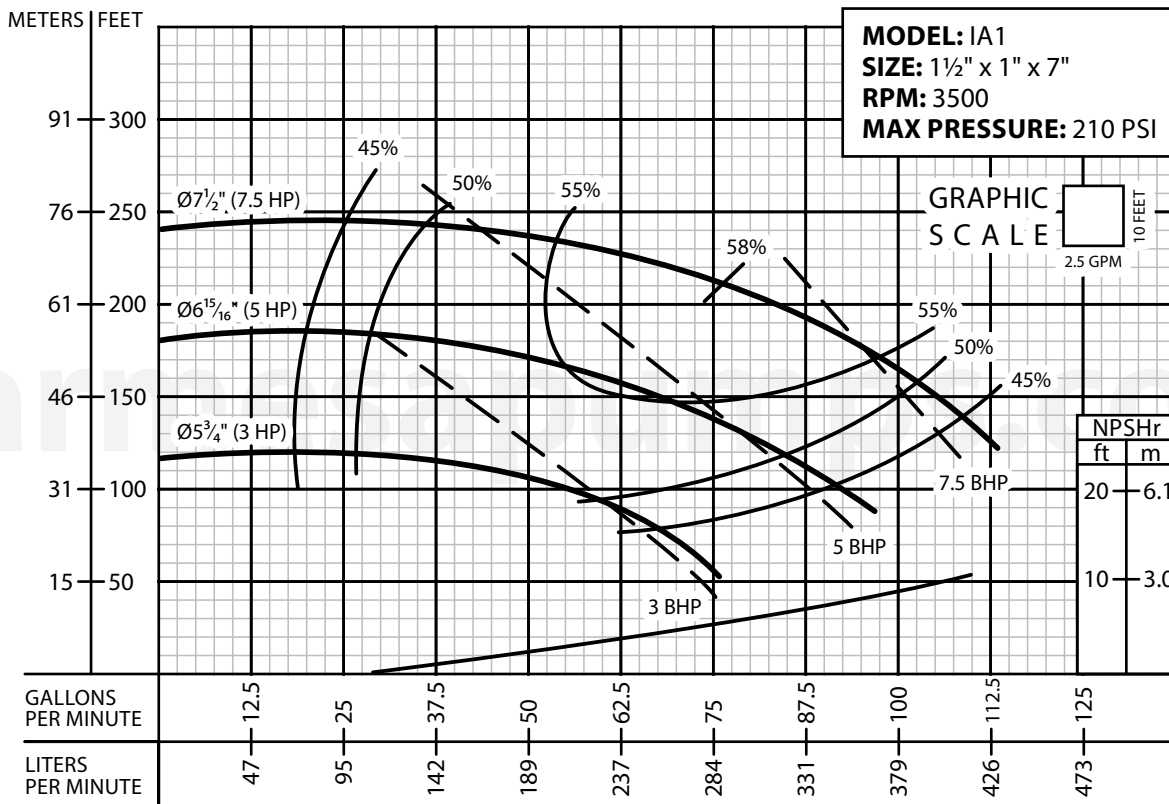


# CENTRIFUGAL PUMP IA6BJM-40-4 GENERAL DIMENSIONS



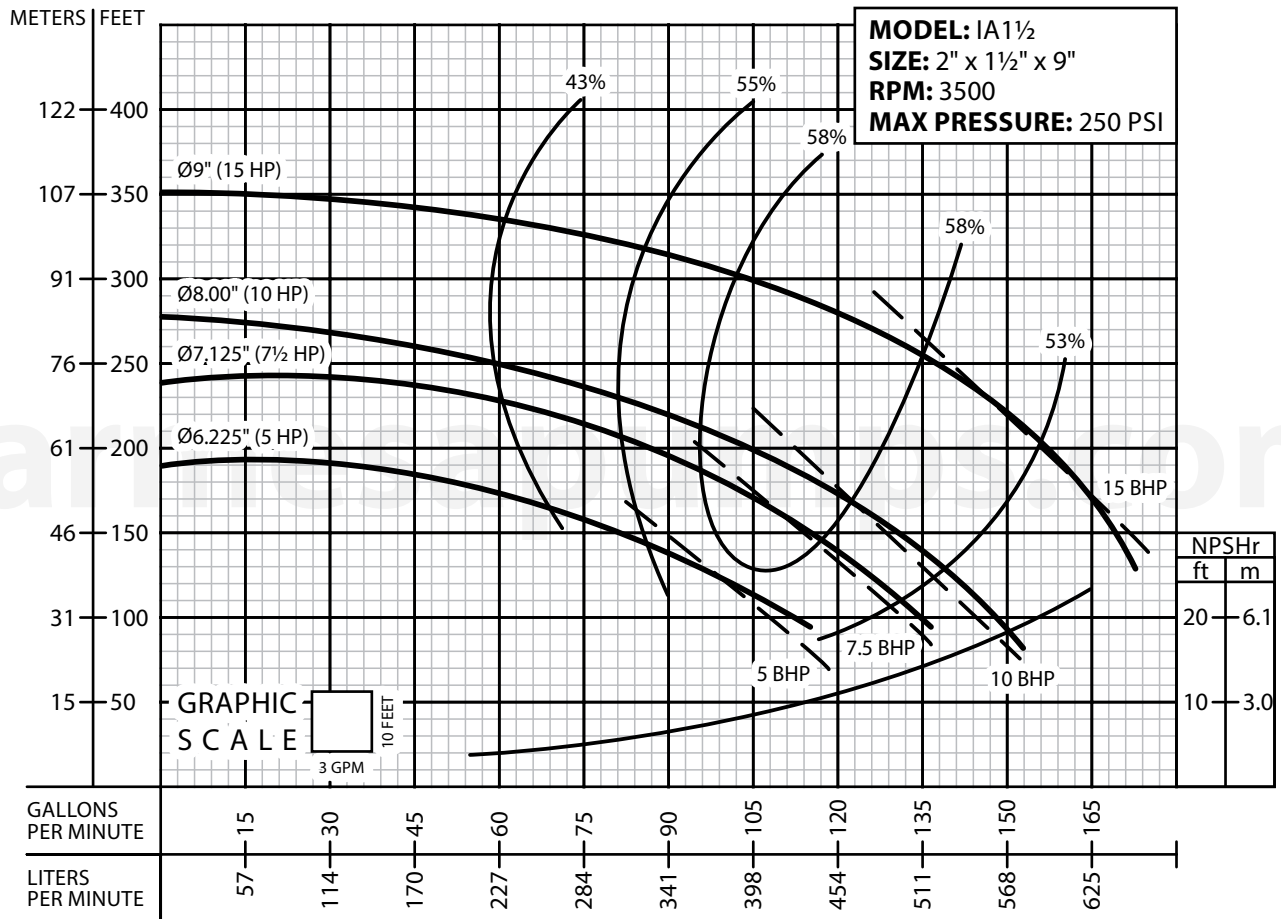
barmesapumps.com

**PERFORMANCE CURVE**  
End-Suction Centrifugal  
Series: **IA**



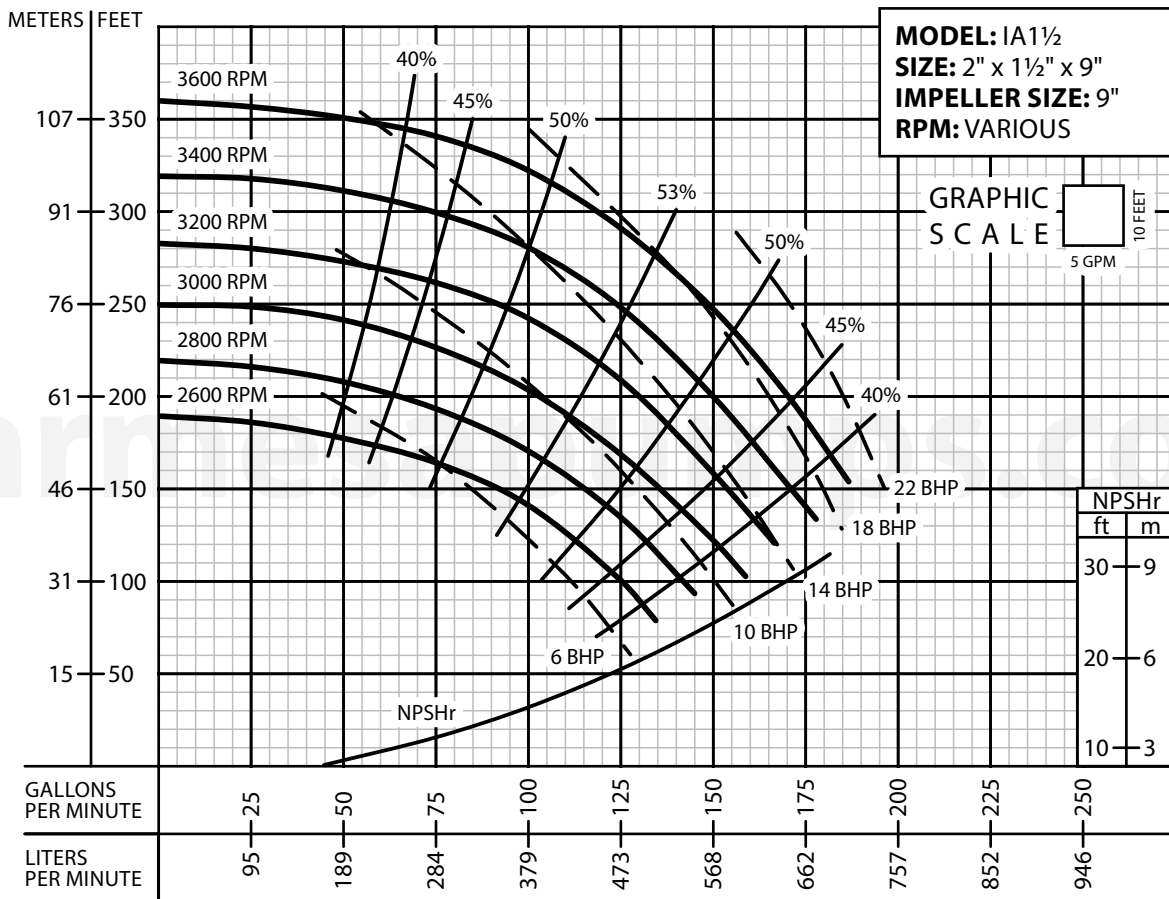
Testing is performed with water specific gravity of 1.0 @ 68 °F (20 °C); other fluids may vary performance.

**PERFORMANCE CURVE**  
End-Suction Centrifugal  
Series: **IA**



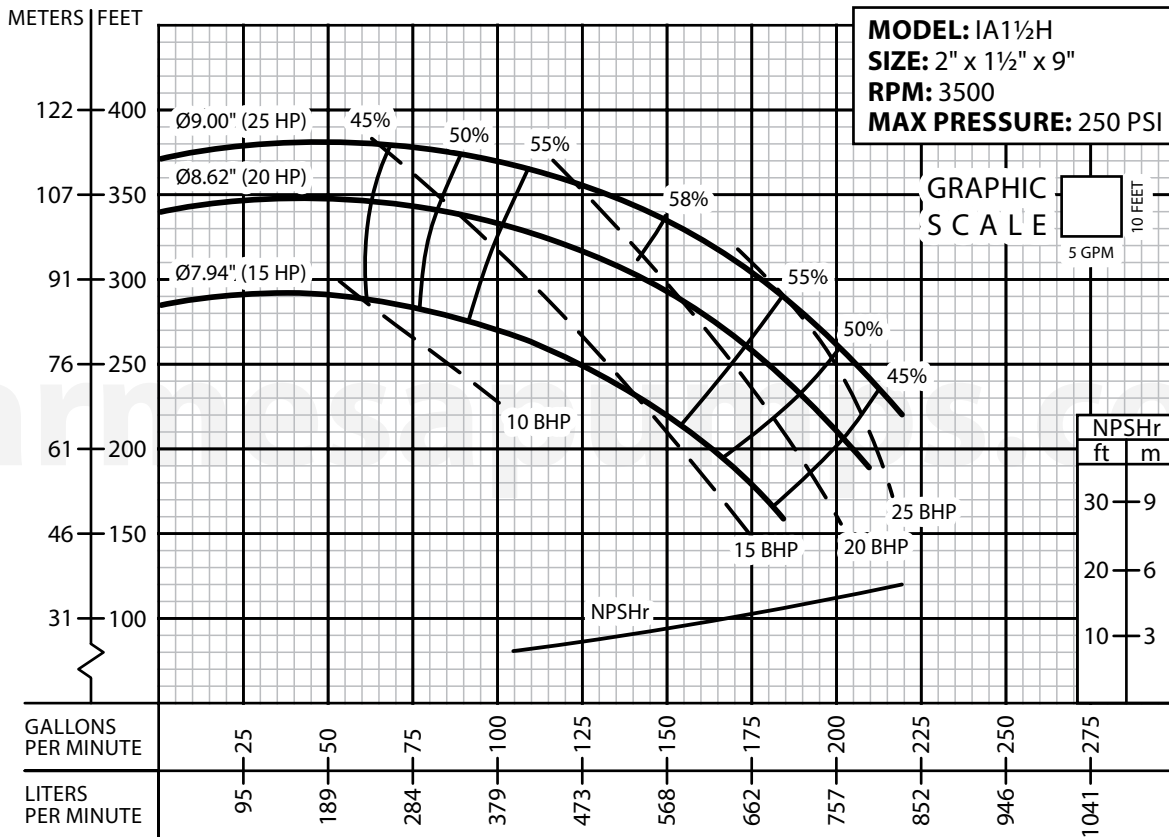
Testing is performed with water specific gravity of 1.0 @ 68 °F (20 °C); other fluids may vary performance.

**PERFORMANCE CURVE**  
End-Suction Centrifugal  
Series: **IA**



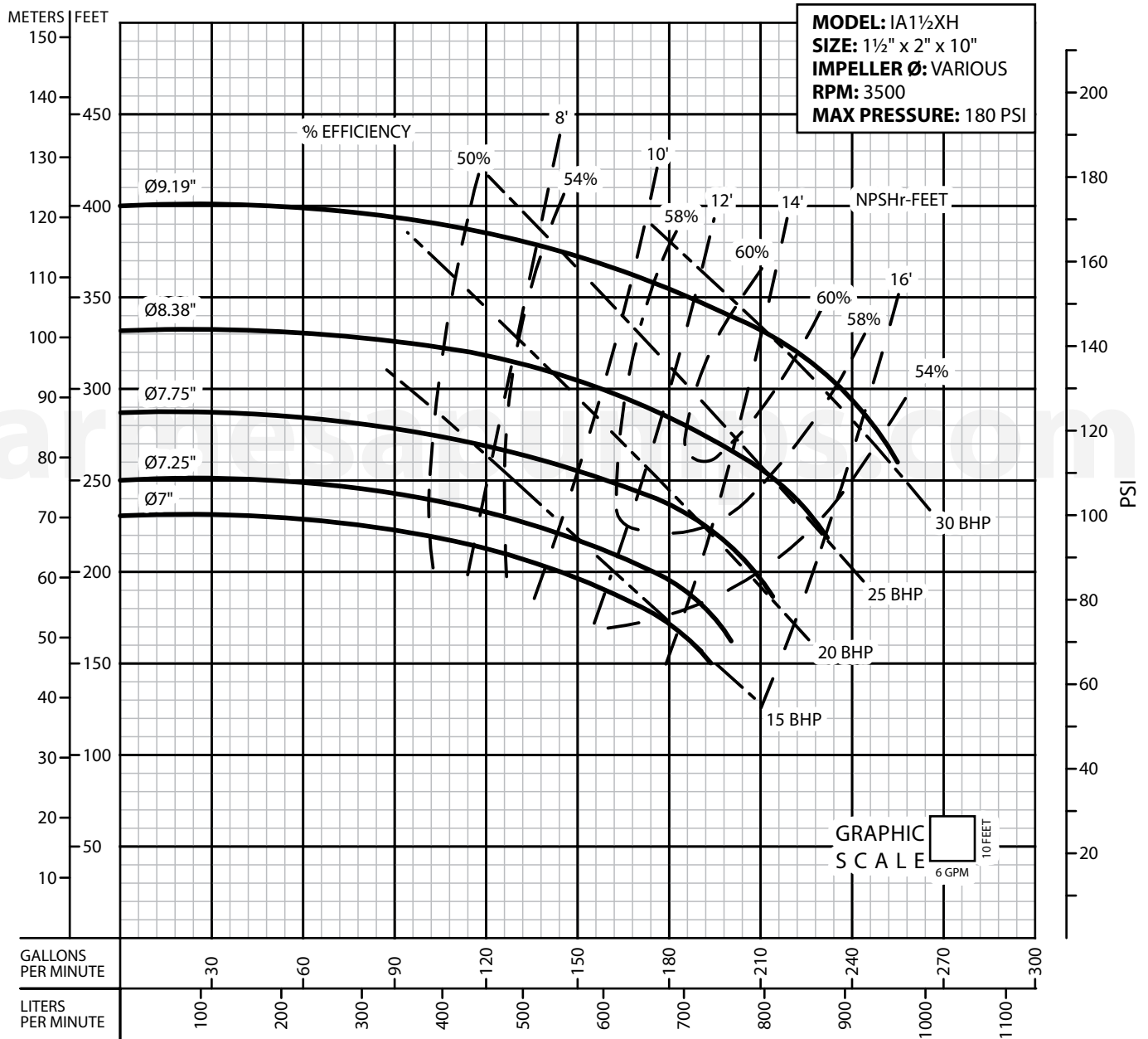
Testing is performed with water specific gravity of 1.0 @ 68 °F (20 °C); other fluids may vary performance.

**PERFORMANCE CURVE**  
End-Suction Centrifugal  
Series: **IA**



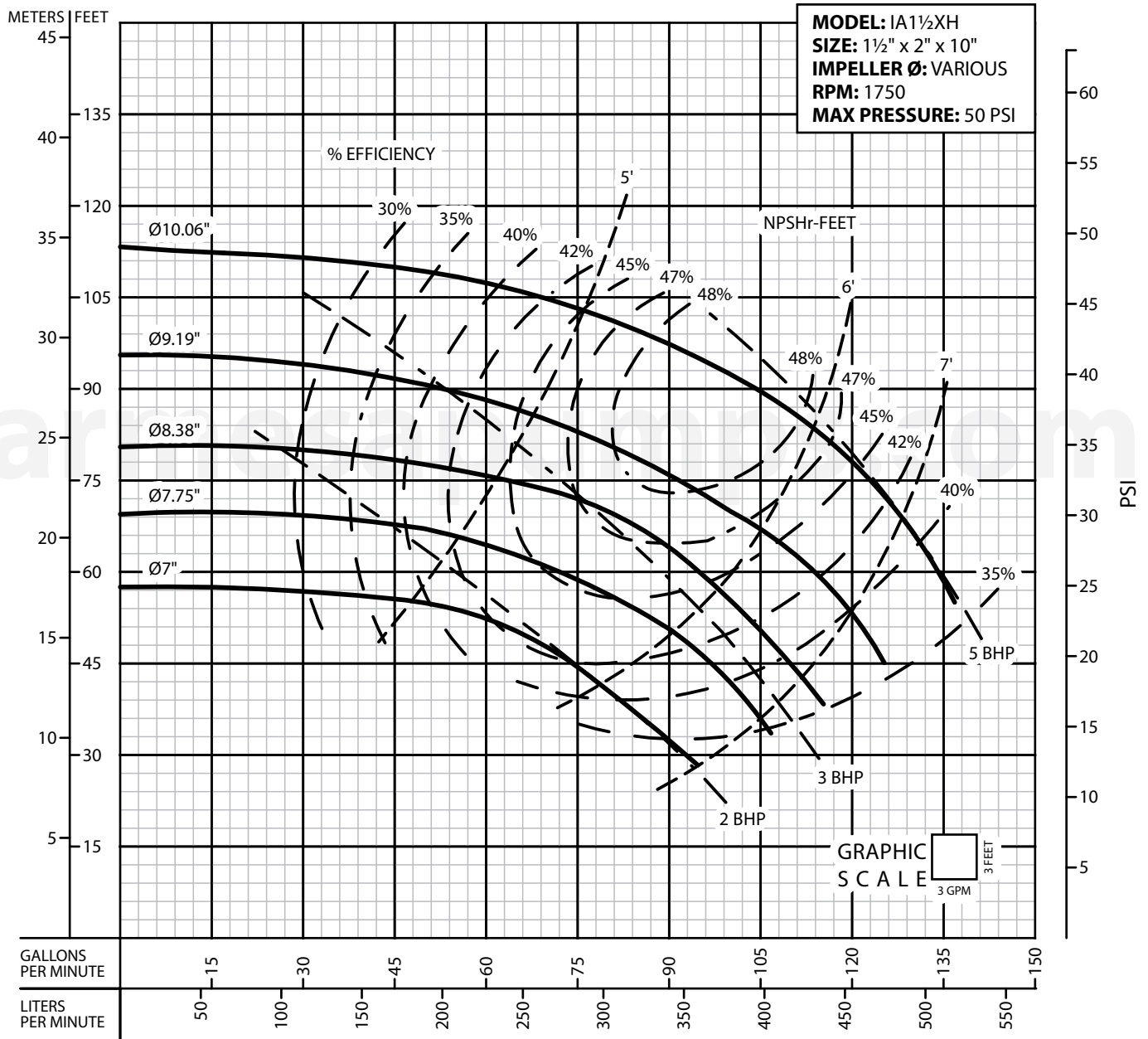
Testing is performed with water specific gravity of 1.0 @ 68 °F (20 °C); other fluids may vary performance.

**PERFORMANCE CURVE**  
End-Suction Centrifugal  
Series: **IA**



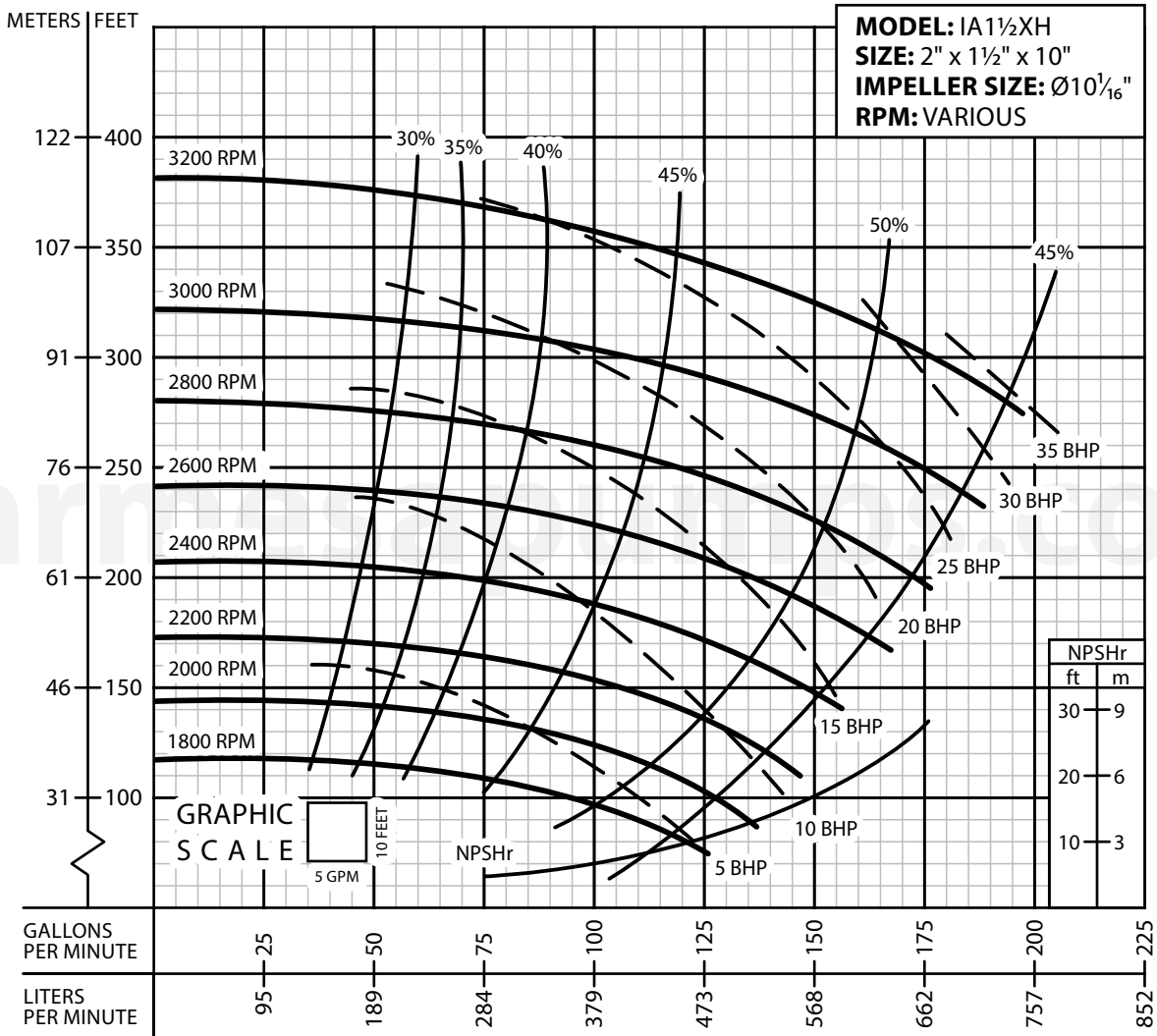
Testing is performed with water specific gravity of 1.0 @ 68 °F (20 °C); other fluids may vary performance.

**PERFORMANCE CURVE**  
End-Suction Centrifugal  
Series: **IA**



Testing is performed with water specific gravity of 1.0 @ 68 °F (20 °C); other fluids may vary performance.

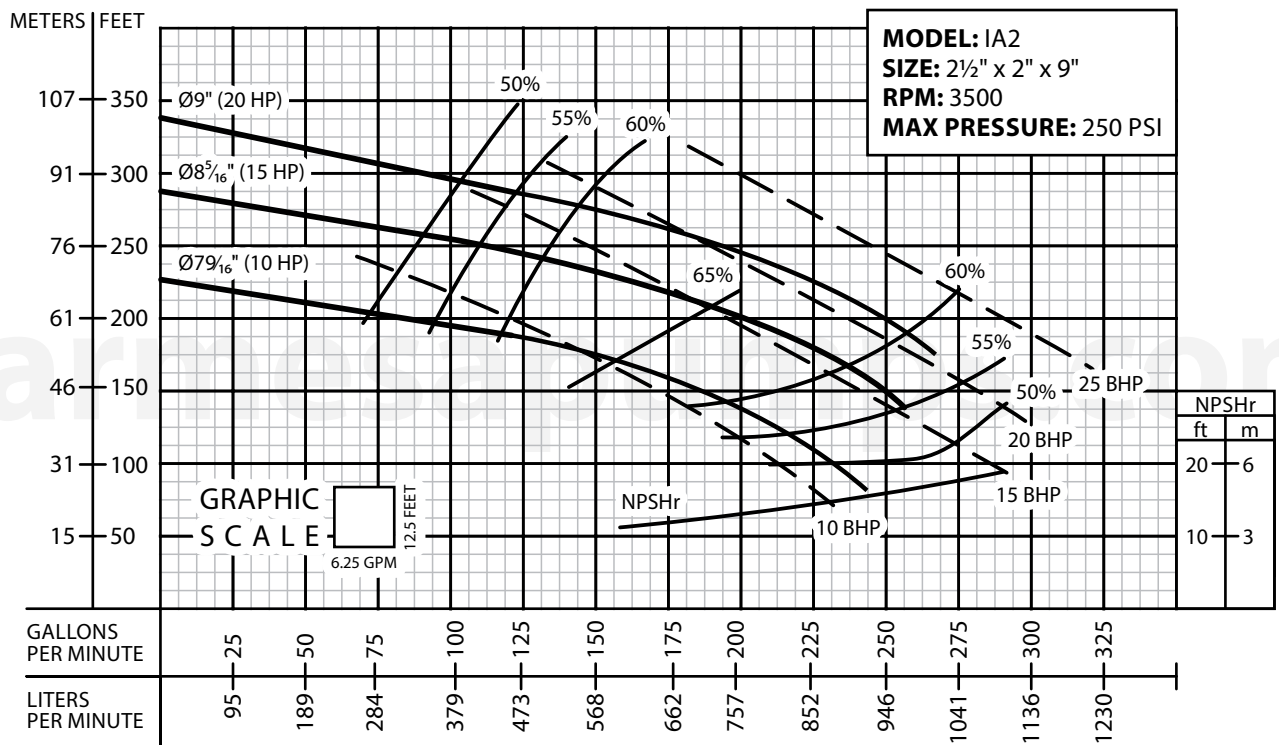
**PERFORMANCE CURVE**  
End-Suction Centrifugal  
Series: **IA**



Testing is performed with water specific gravity of 1.0 @ 68 °F (20 °C); other fluids may vary performance.

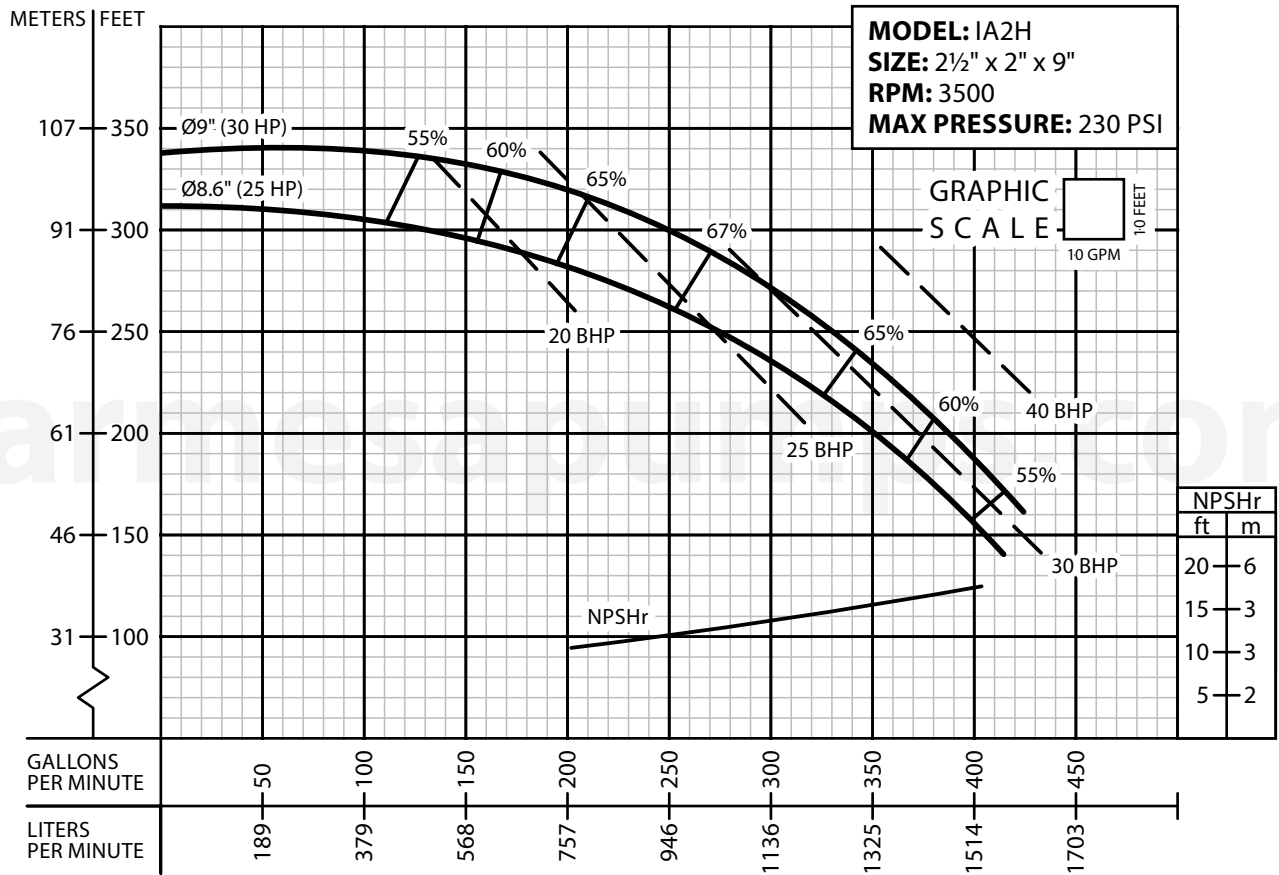


**PERFORMANCE CURVE**  
End-Suction Centrifugal  
Series: **IA**



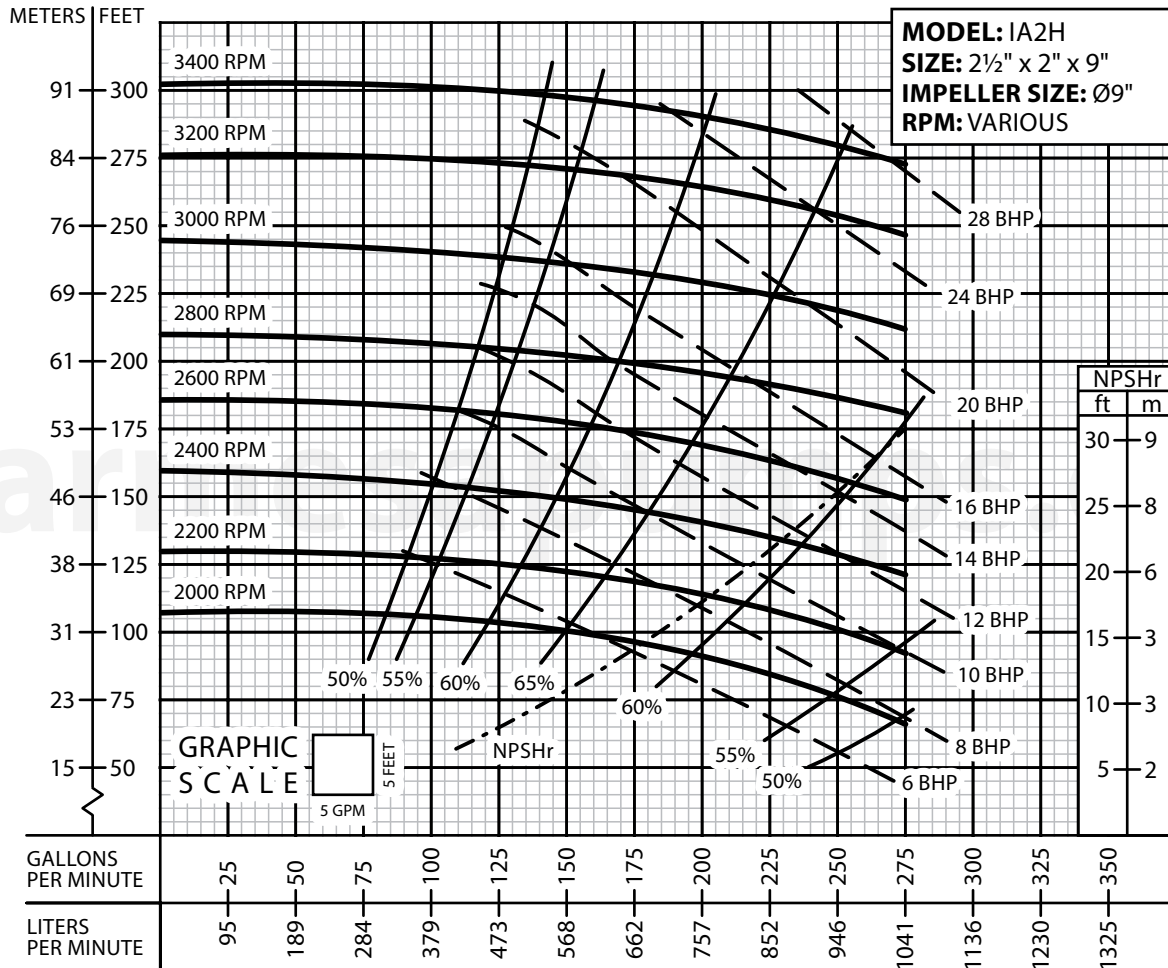
Testing is performed with water specific gravity of 1.0 @ 68 °F (20 °C); other fluids may vary performance.

**PERFORMANCE CURVE**  
End-Suction Centrifugal  
Series: **IA**



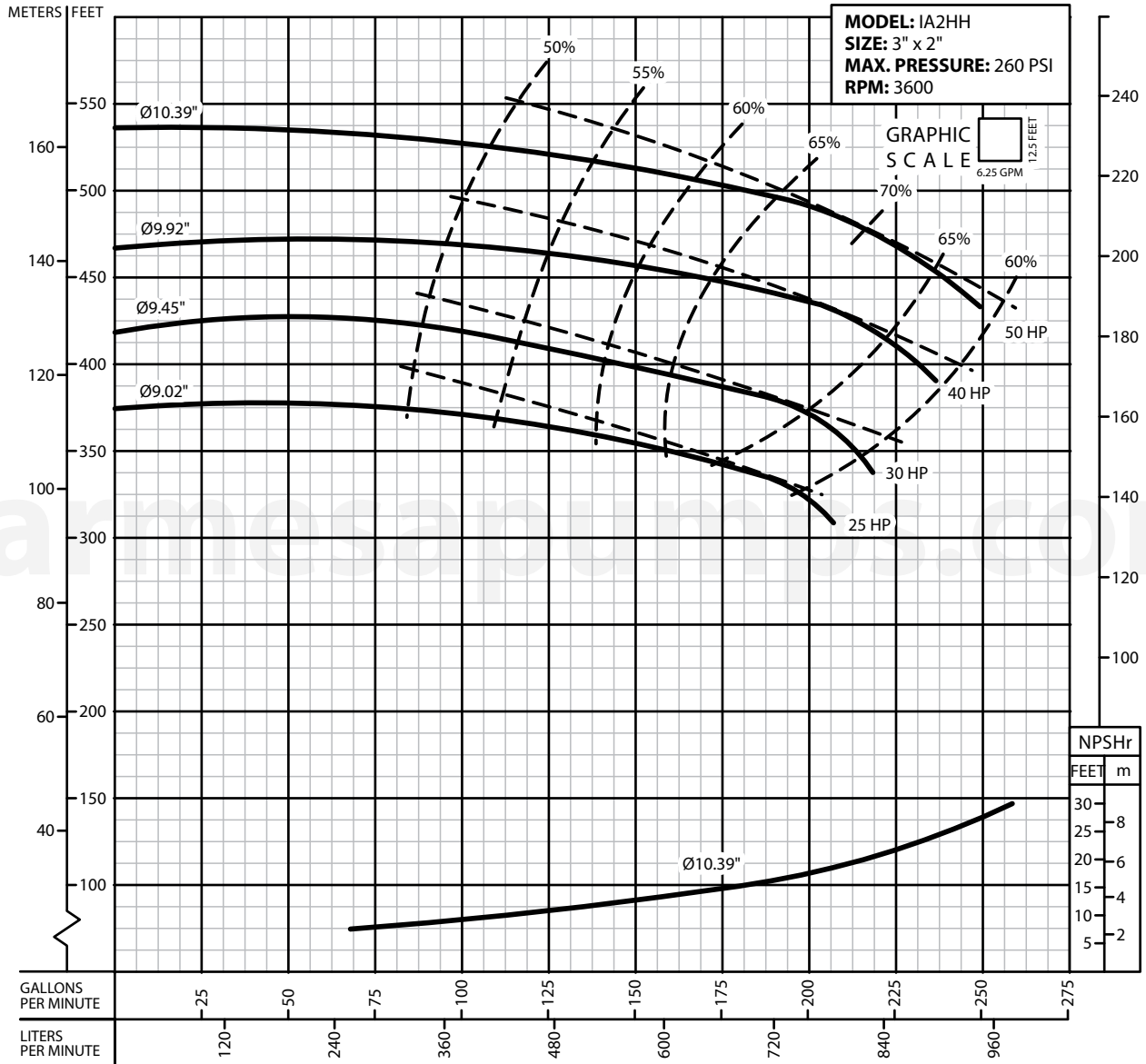
Testing is performed with water specific gravity of 1.0 @ 68 °F (20 °C); other fluids may vary performance.

**PERFORMANCE CURVE**  
End-Suction Centrifugal  
Series: **IA**



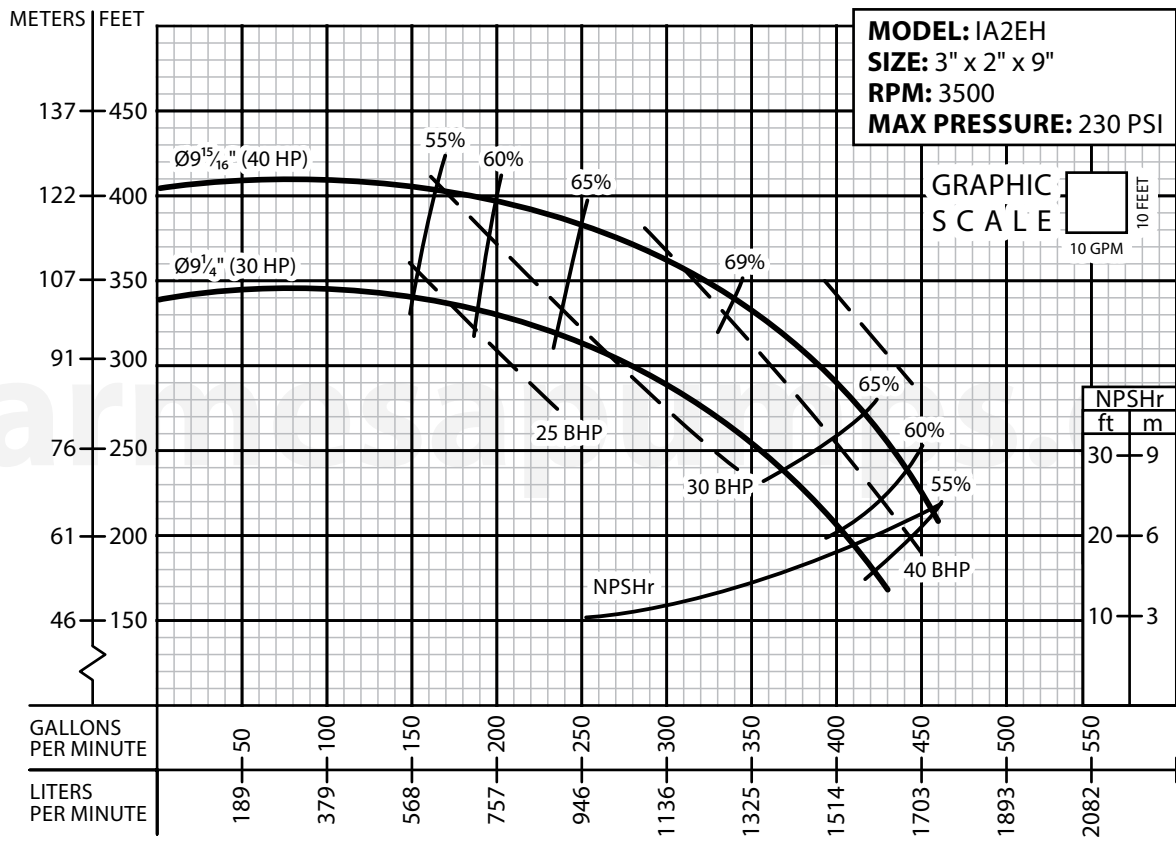
Testing is performed with water specific gravity of 1.0 @ 68 °F (20 °C); other fluids may vary performance.

**PERFORMANCE CURVE**  
End-Suction Centrifugal  
Series: **IA**



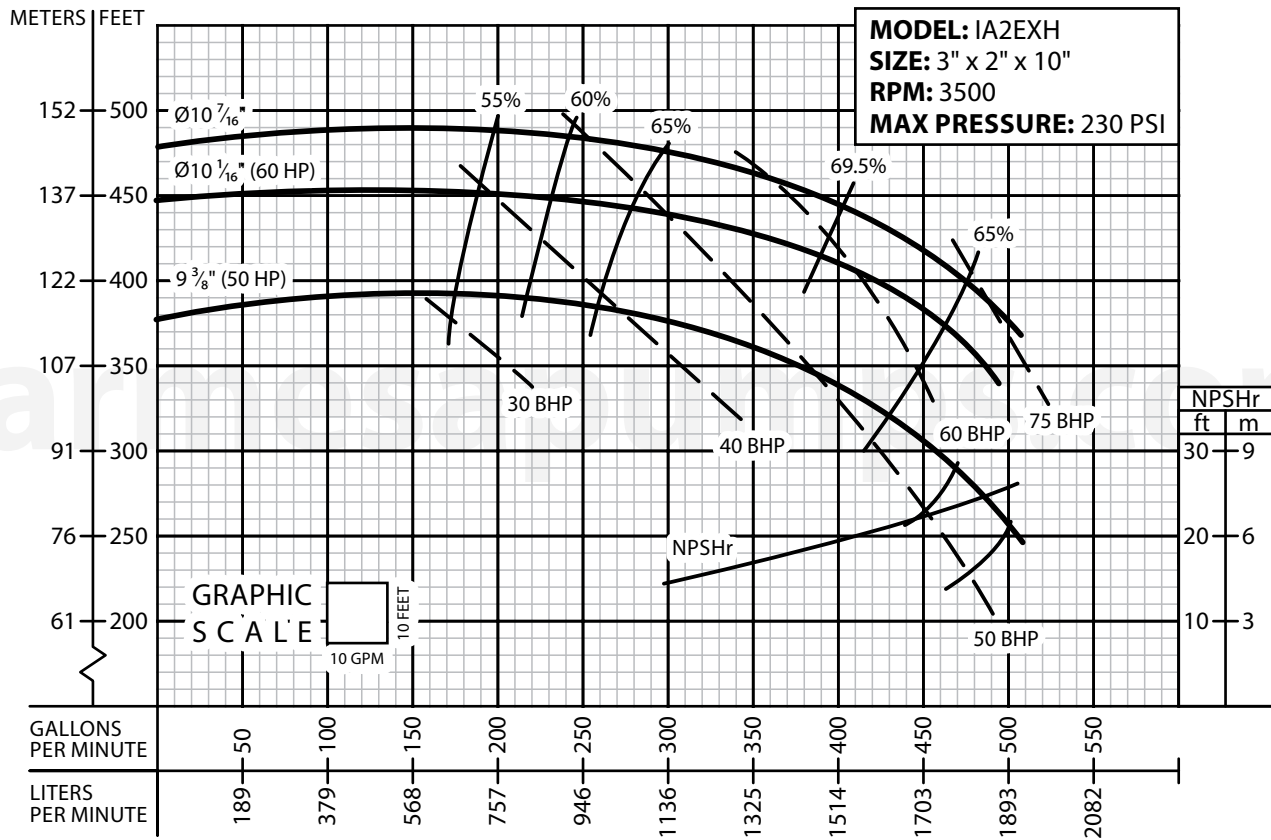
Testing is performed with water specific gravity of 1.0 @ 68 °F (20 °C); other fluids may vary performance.

**PERFORMANCE CURVE**  
End-Suction Centrifugal  
Series: **IA**



Testing is performed with water specific gravity of 1.0 @ 68 °F (20 °C); other fluids may vary performance.

**PERFORMANCE CURVE**  
End-Suction Centrifugal  
Series: **IA**



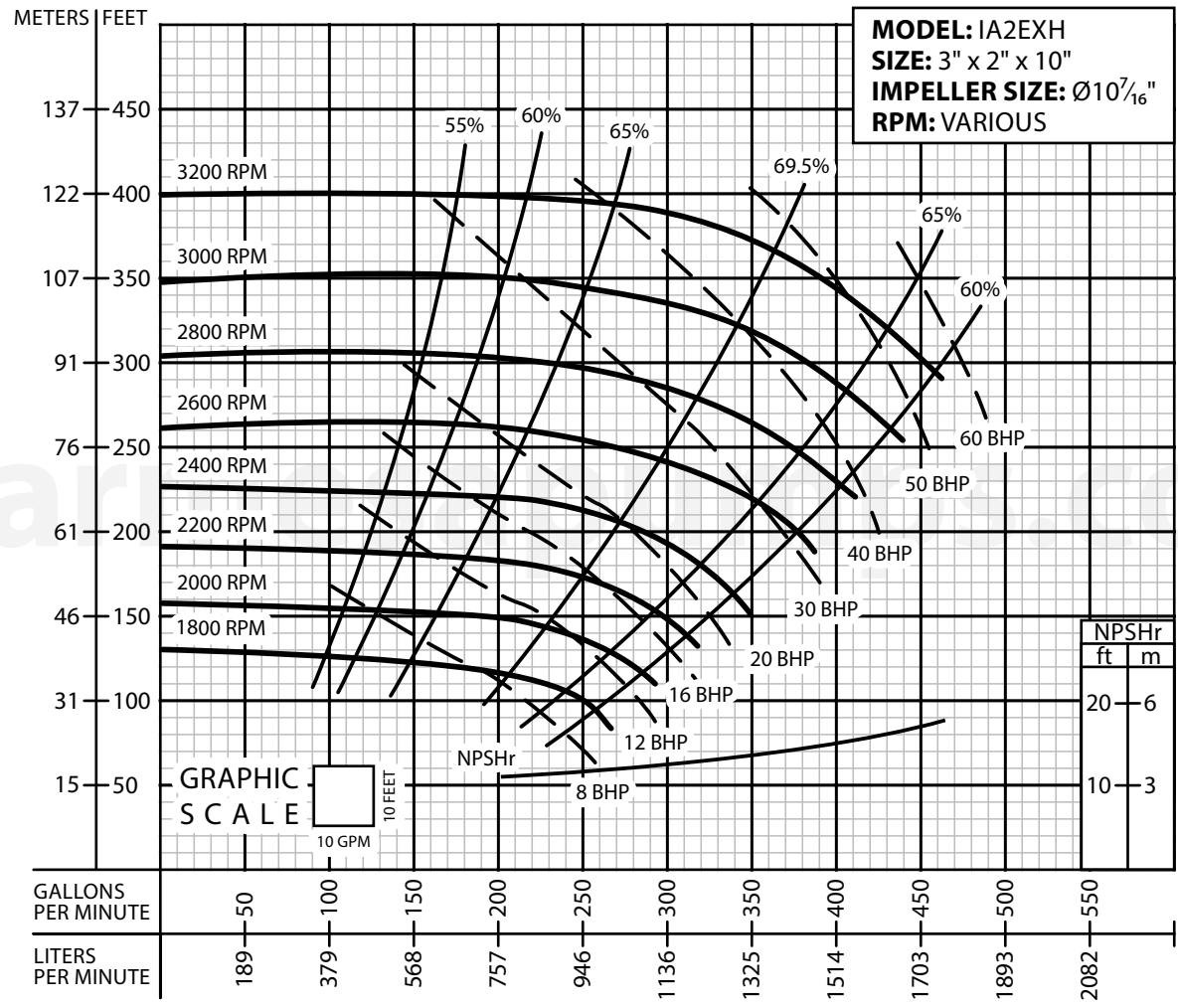
Testing is performed with water specific gravity of 1.0 @ 68 °F (20 °C); other fluids may vary performance.



# PERFORMANCE CURVE

## End-Suction Centrifugal

### Series: IA



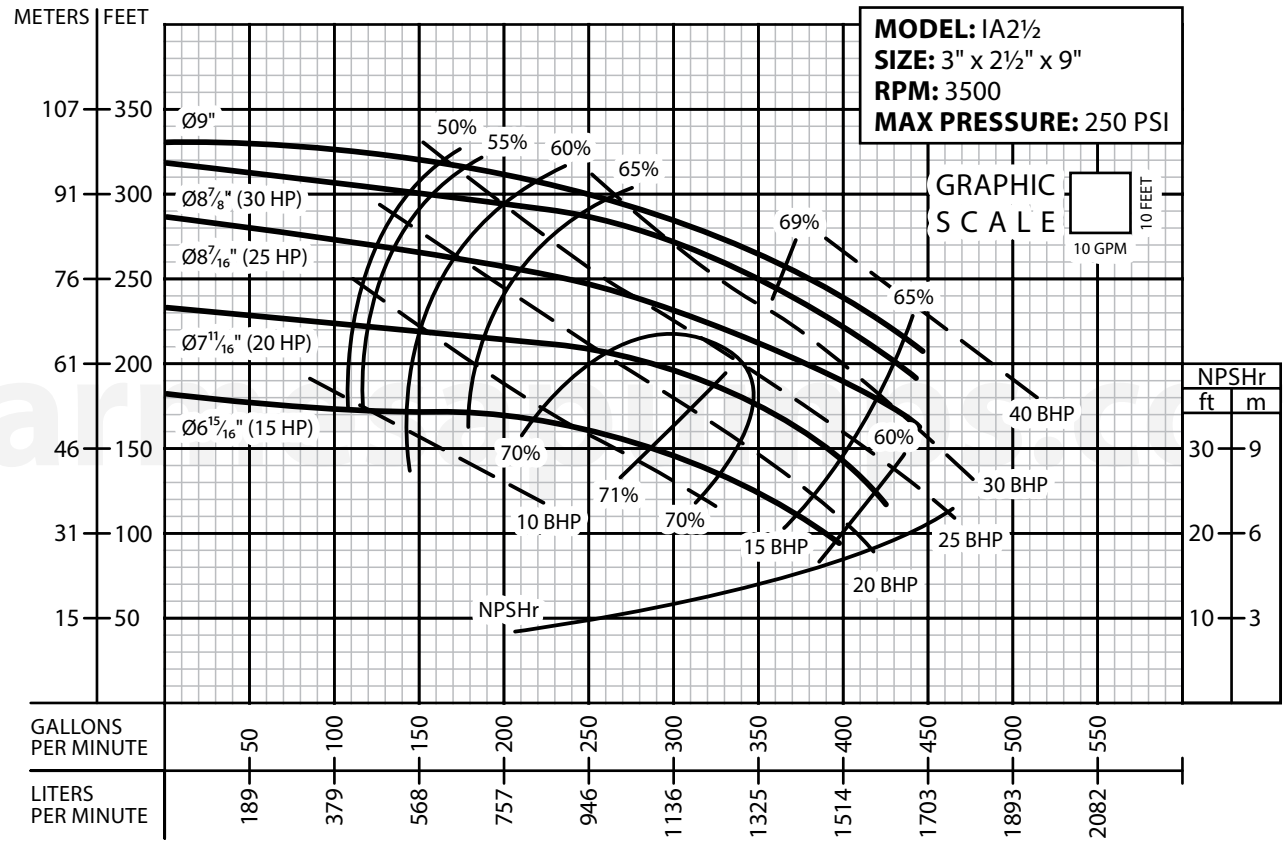
Testing is performed with water specific gravity of 1.0 @ 68 °F (20 °C); other fluids may vary performance.



# PERFORMANCE CURVE

## End-Suction Centrifugal

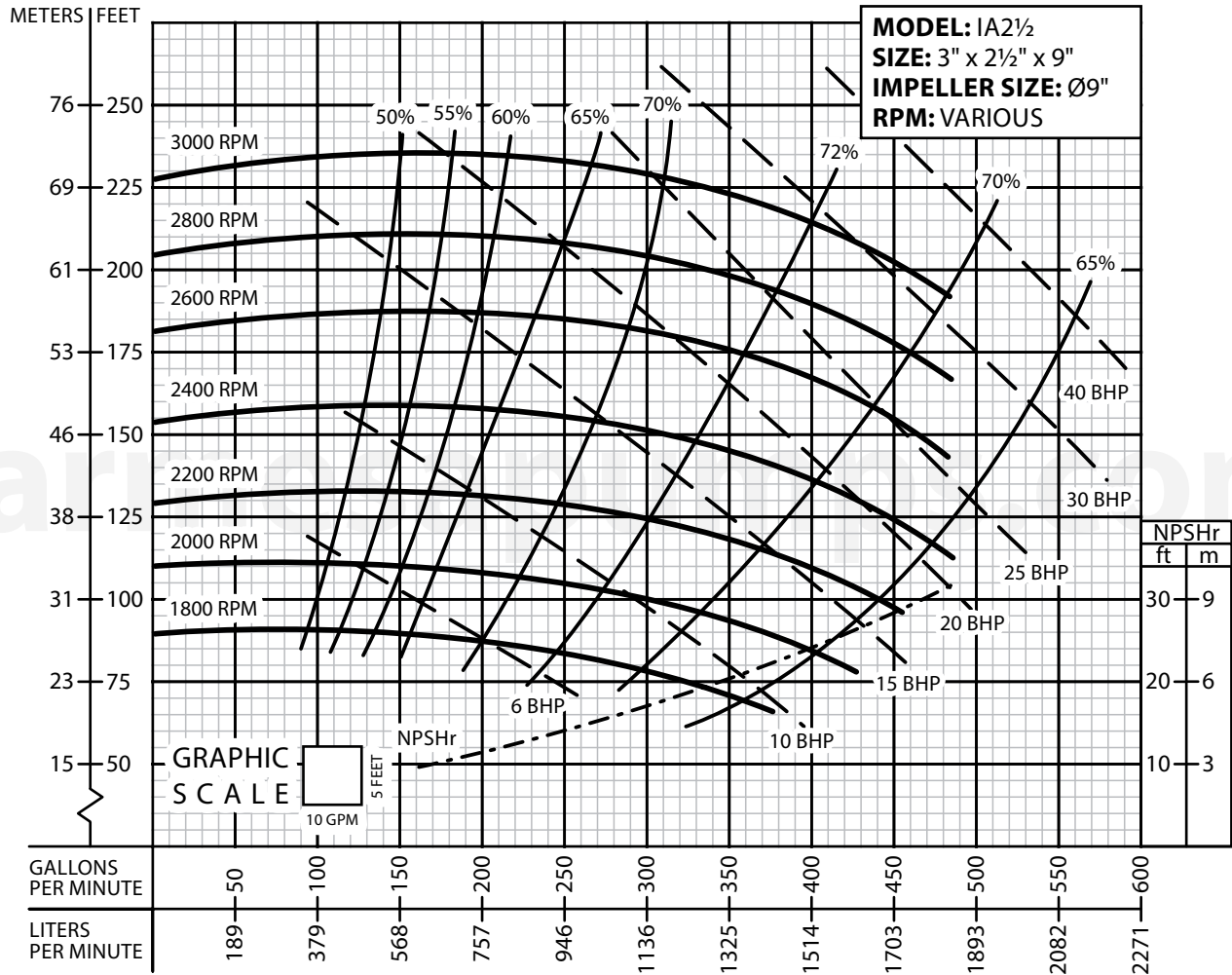
### Series: IA



Testing is performed with water specific gravity of 1.0 @ 68 °F (20 °C); other fluids may vary performance.

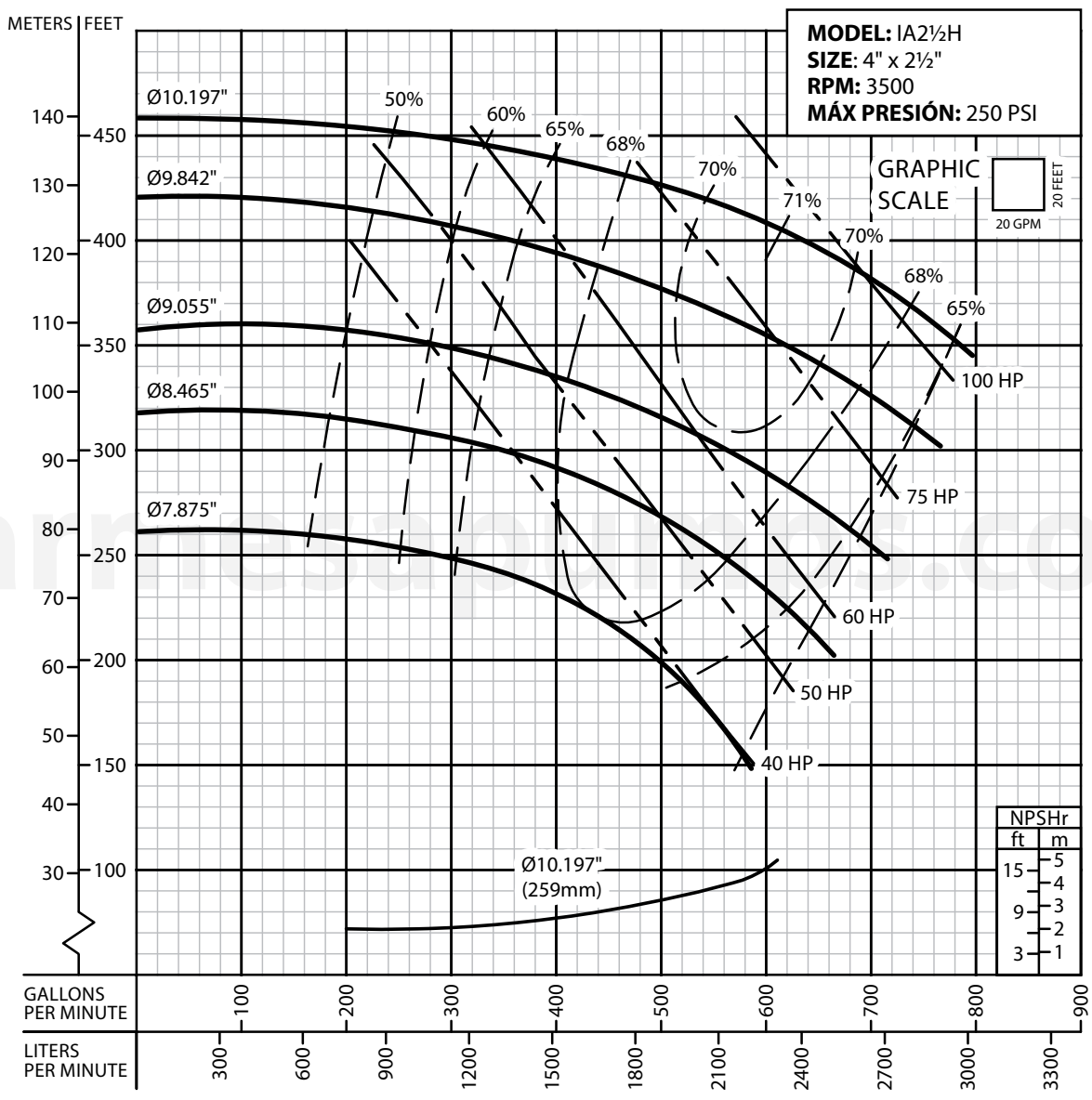


**PERFORMANCE CURVE**  
End-Suction Centrifugal  
Series: **IA**



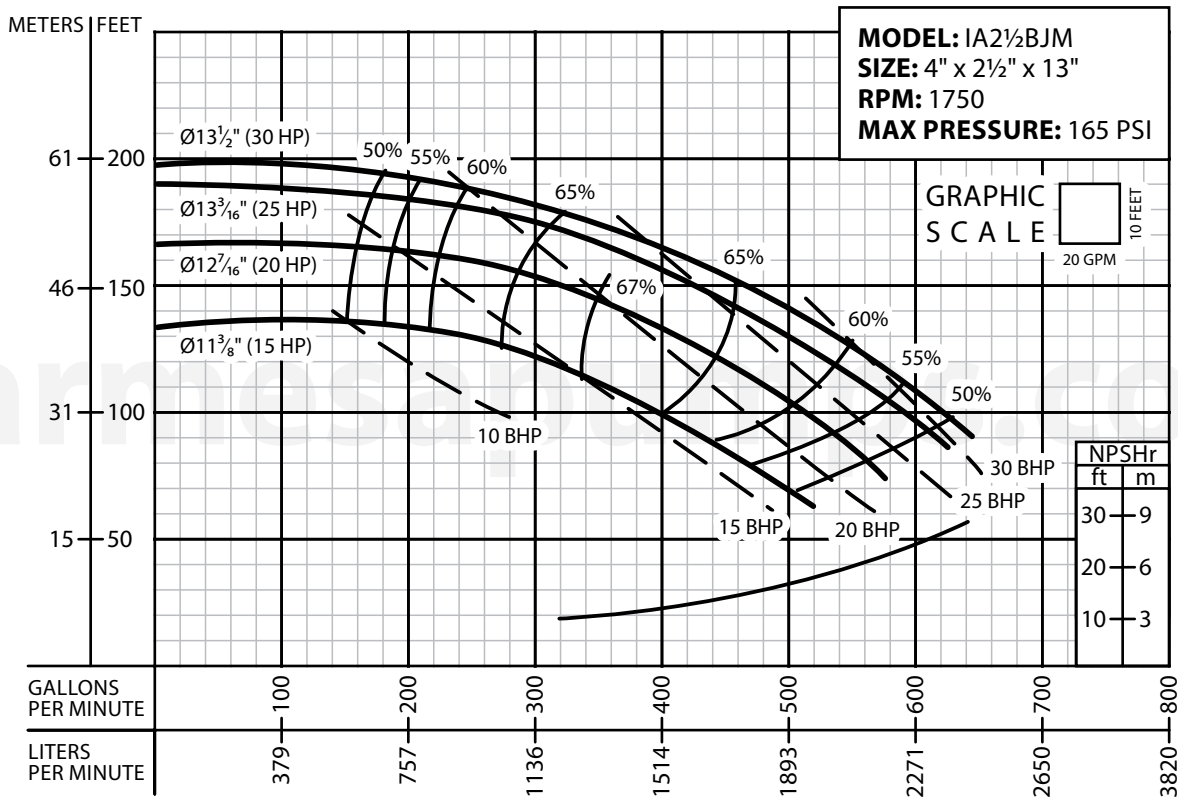
Testing is performed with water specific gravity of 1.0 @ 68 °F (20 °C); other fluids may vary performance.

**PERFORMANCE CURVE**  
End-Suction Centrifugal  
Series: **IA**



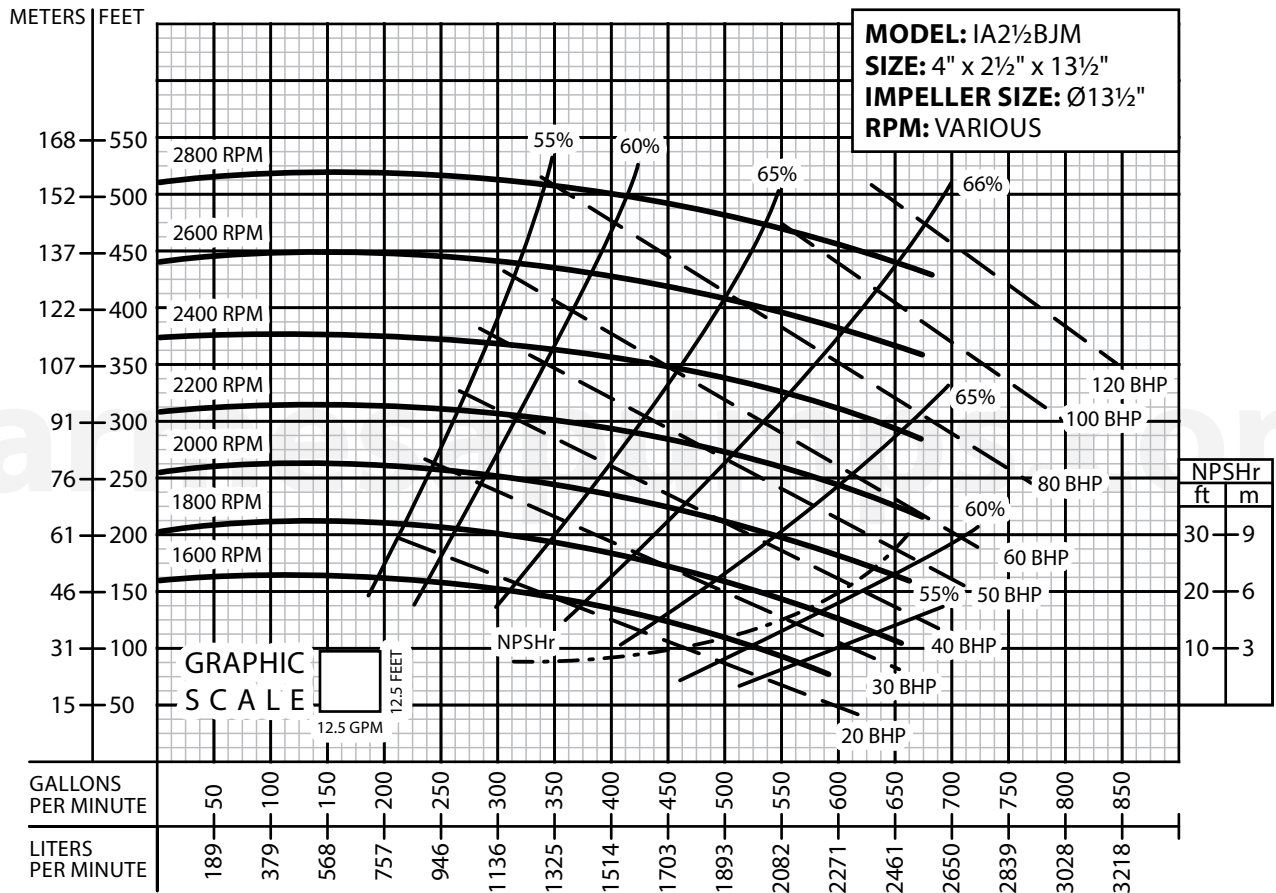
Testing is performed with water specific gravity of 1.0 @ 68 °F (20 °C); other fluids may vary performance.

**PERFORMANCE CURVE**  
End-Suction Centrifugal  
Series: **IA**



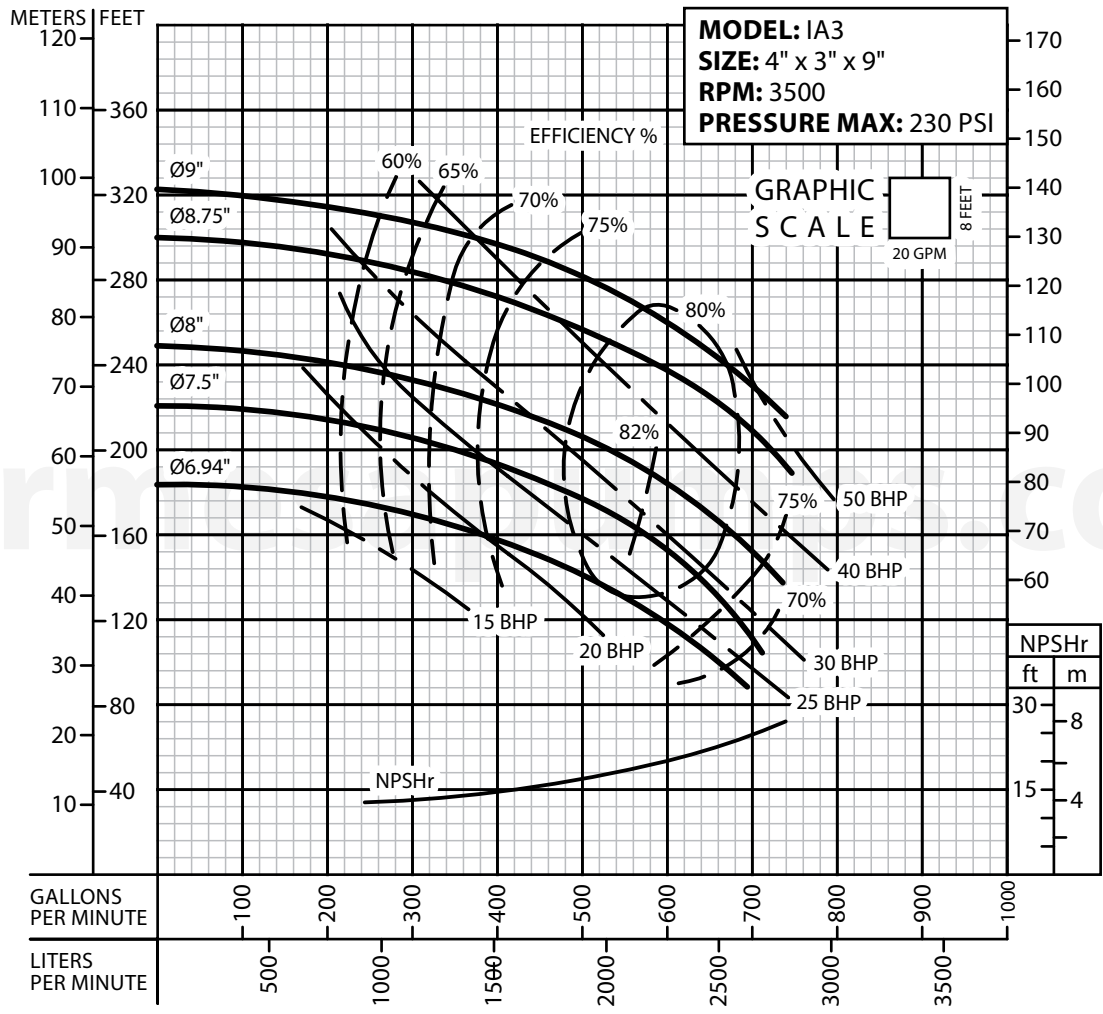
Testing is performed with water specific gravity of 1.0 @ 68 °F (20 °C); other fluids may vary performance.

**PERFORMANCE CURVE**  
End-Suction Centrifugal  
Series: **IA**



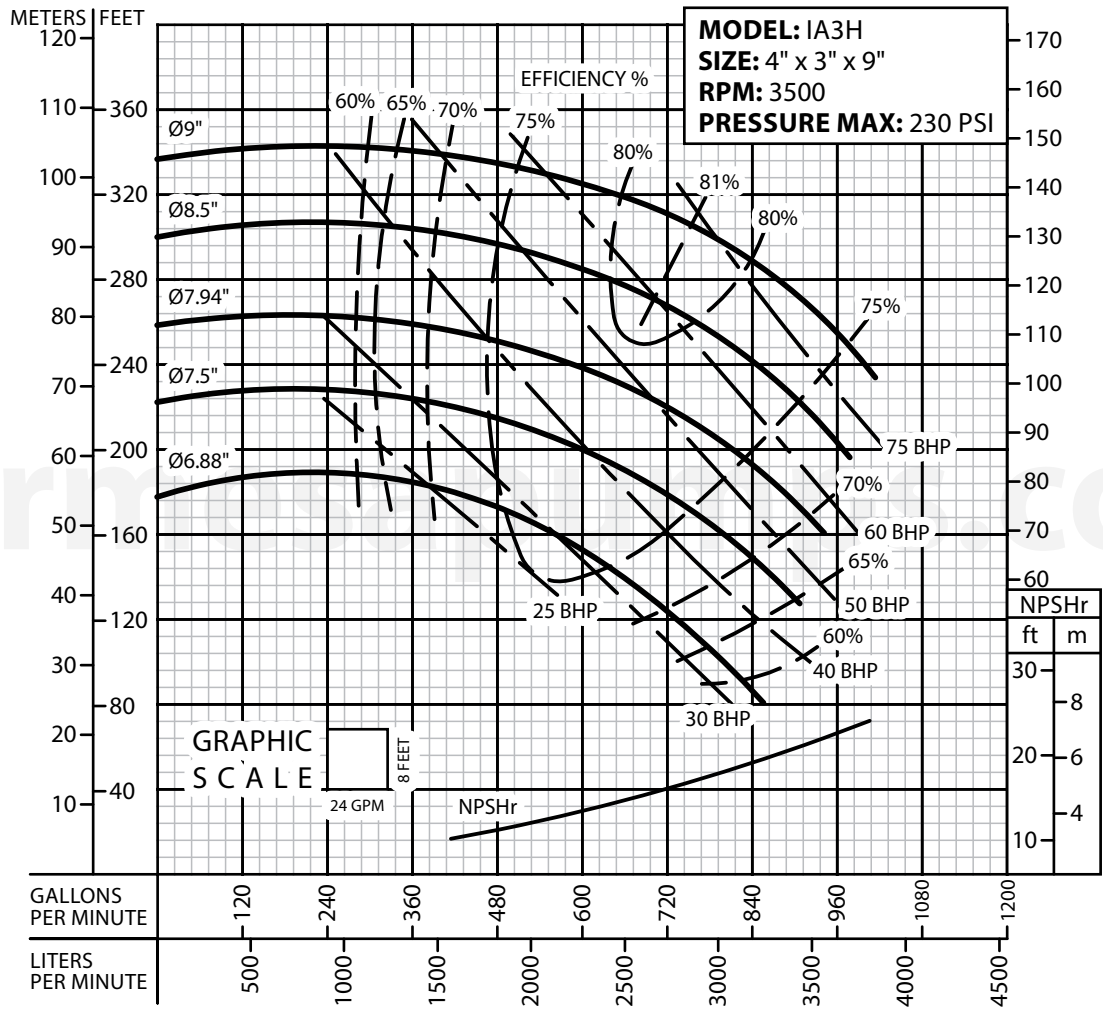
Testing is performed with water specific gravity of 1.0 @ 68 °F (20 °C); other fluids may vary performance.

**PERFORMANCE CURVE**  
End-Suction Centrifugal  
Series: **IA**



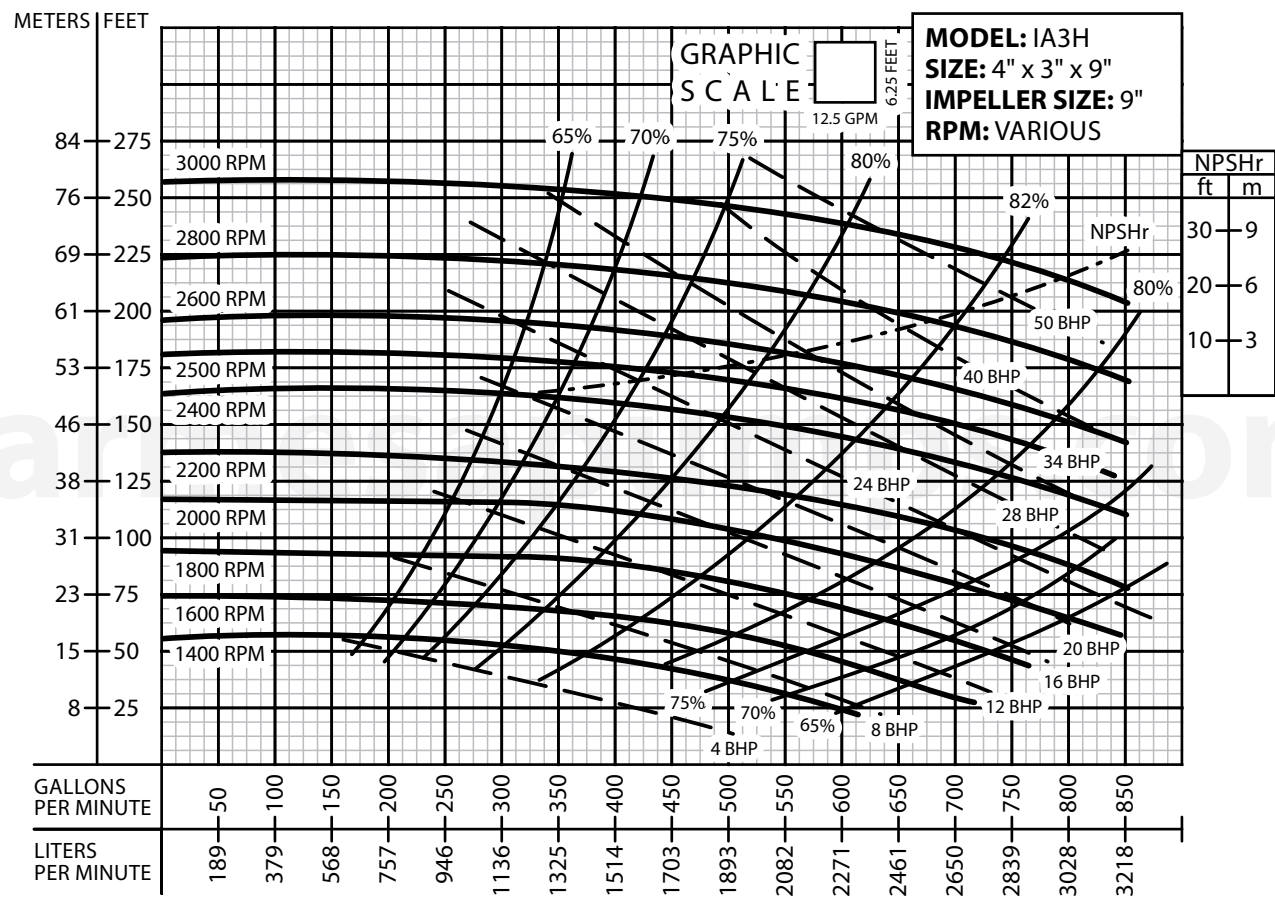
Testing is performed with water specific gravity of 1.0 @ 68 °F (20 °C); other fluids may vary performance.

**PERFORMANCE CURVE**  
End-Suction Centrifugal  
Series: **IA**



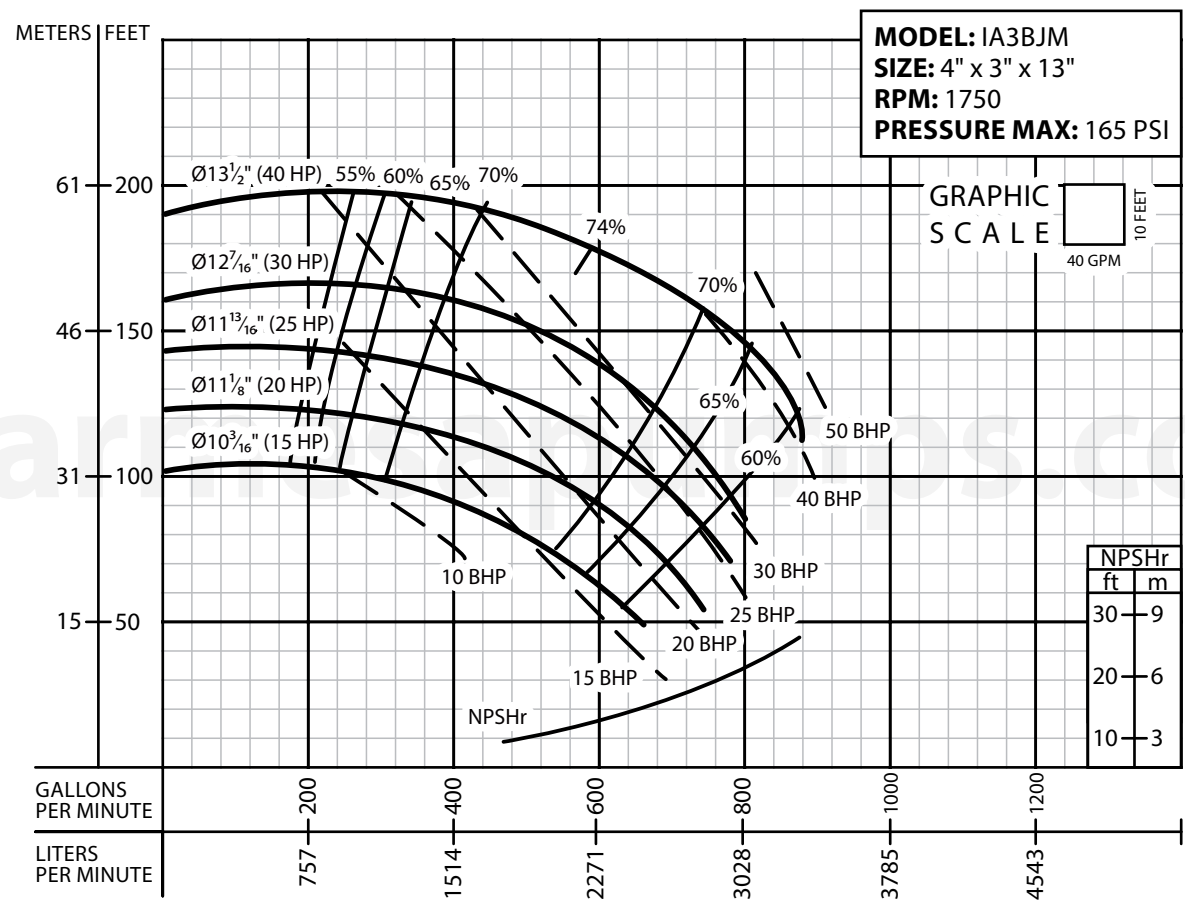
Testing is performed with water specific gravity of 1.0 @ 68 °F (20 °C); other fluids may vary performance.

**PERFORMANCE CURVE**  
End-Suction Centrifugal  
Series: **IA**



Testing is performed with water specific gravity of 1.0 @ 68 °F (20 °C); other fluids may vary performance.

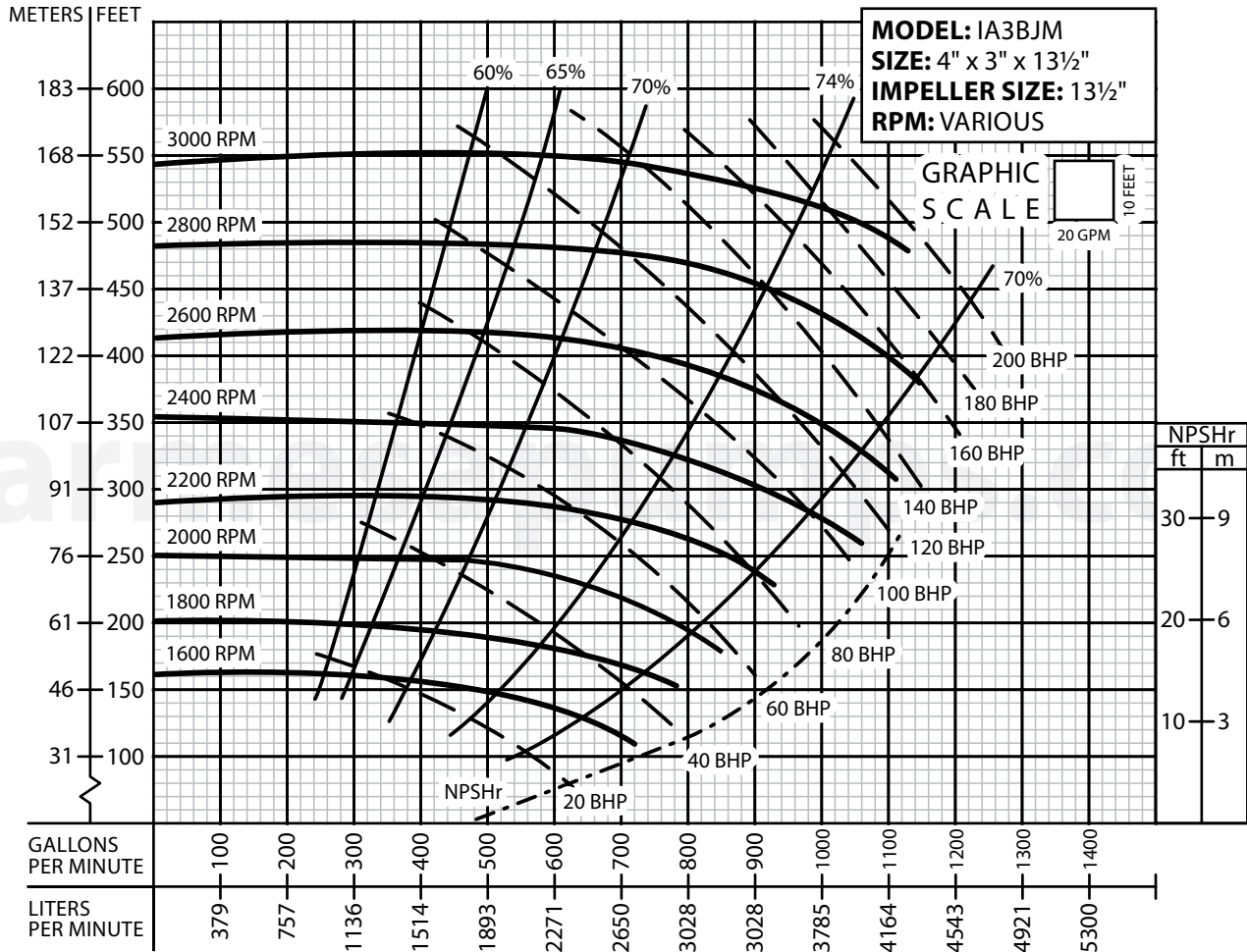
**PERFORMANCE CURVE**  
End-Suction Centrifugal  
Series: **IA**



Testing is performed with water specific gravity of 1.0 @ 68 °F (20 °C); other fluids may vary performance.

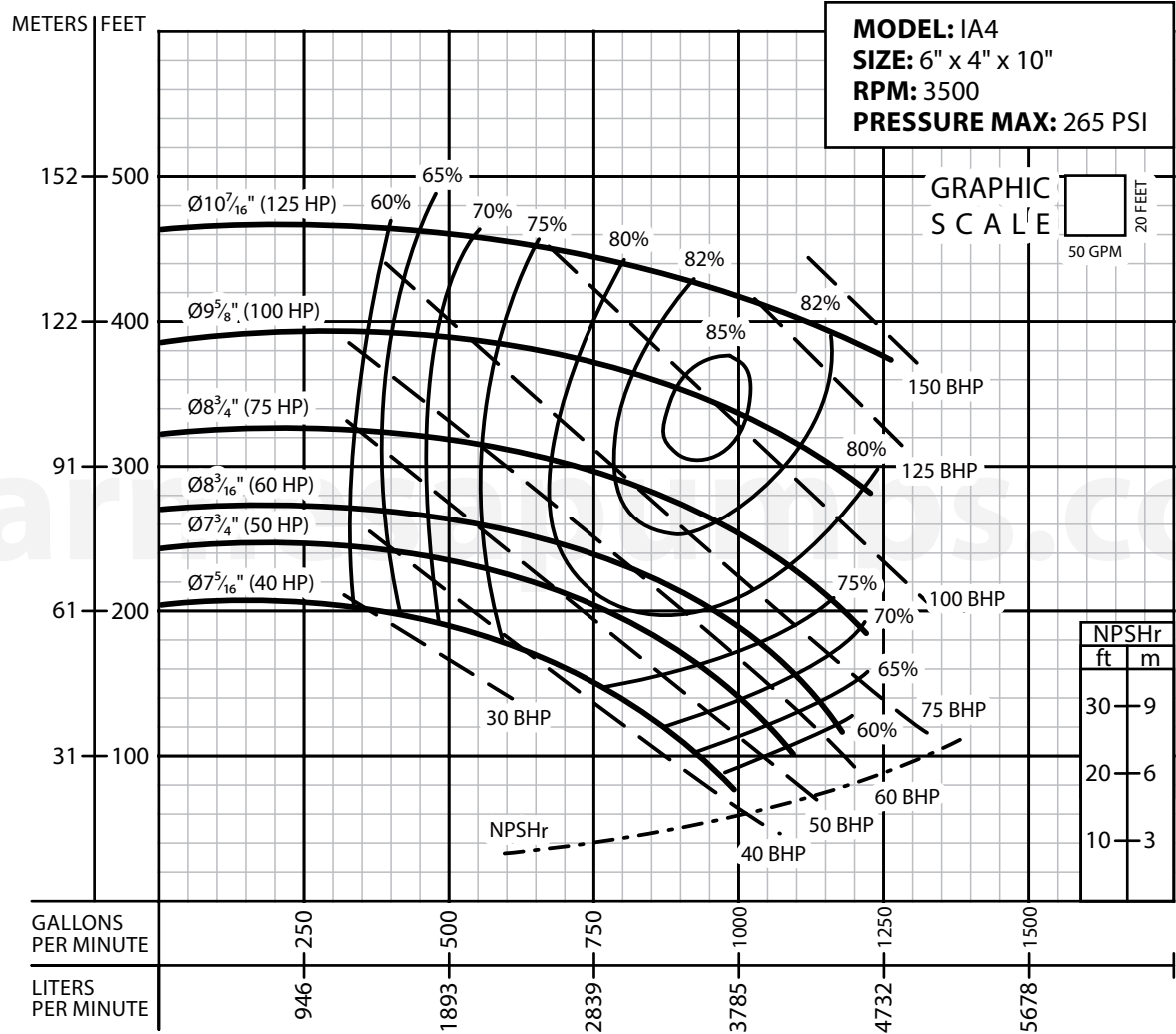


**PERFORMANCE CURVE**  
End-Suction Centrifugal  
Series: **IA**



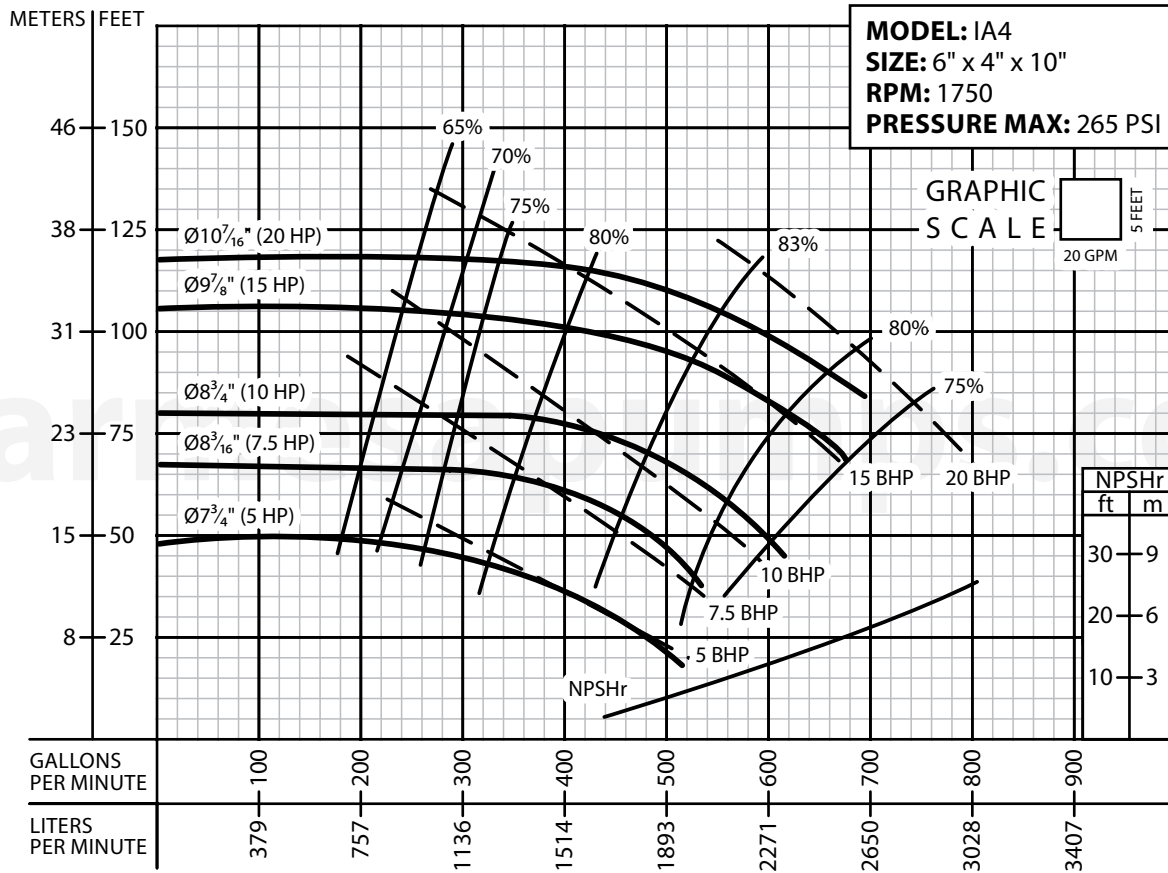
Testing is performed with water specific gravity of 1.0 @ 68 °F (20 °C); other fluids may vary performance.

**PERFORMANCE CURVE**  
End-Suction Centrifugal  
Series: **IA**



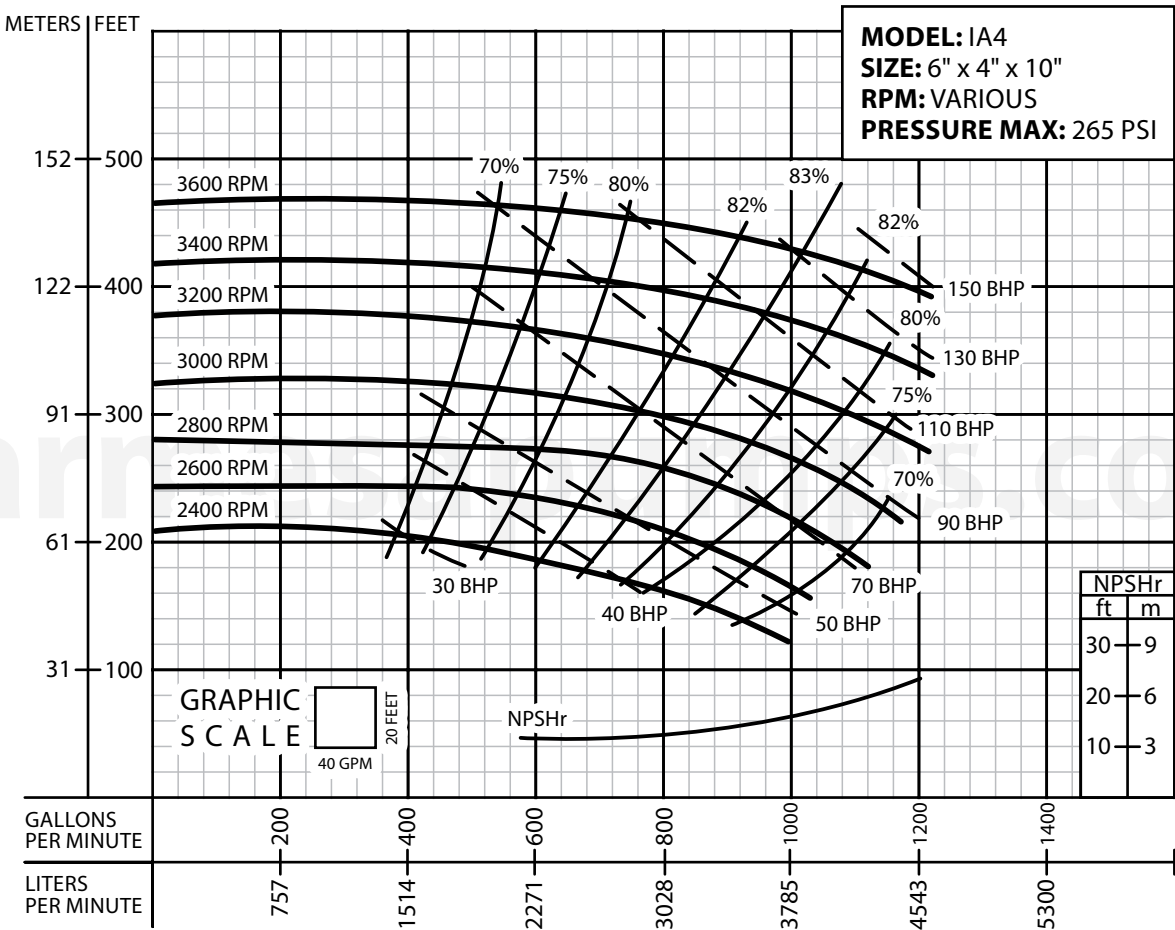
Testing is performed with water specific gravity of 1.0 @ 68 °F (20 °C); other fluids may vary performance.

**PERFORMANCE CURVE**  
End-Suction Centrifugal  
Series: **IA**



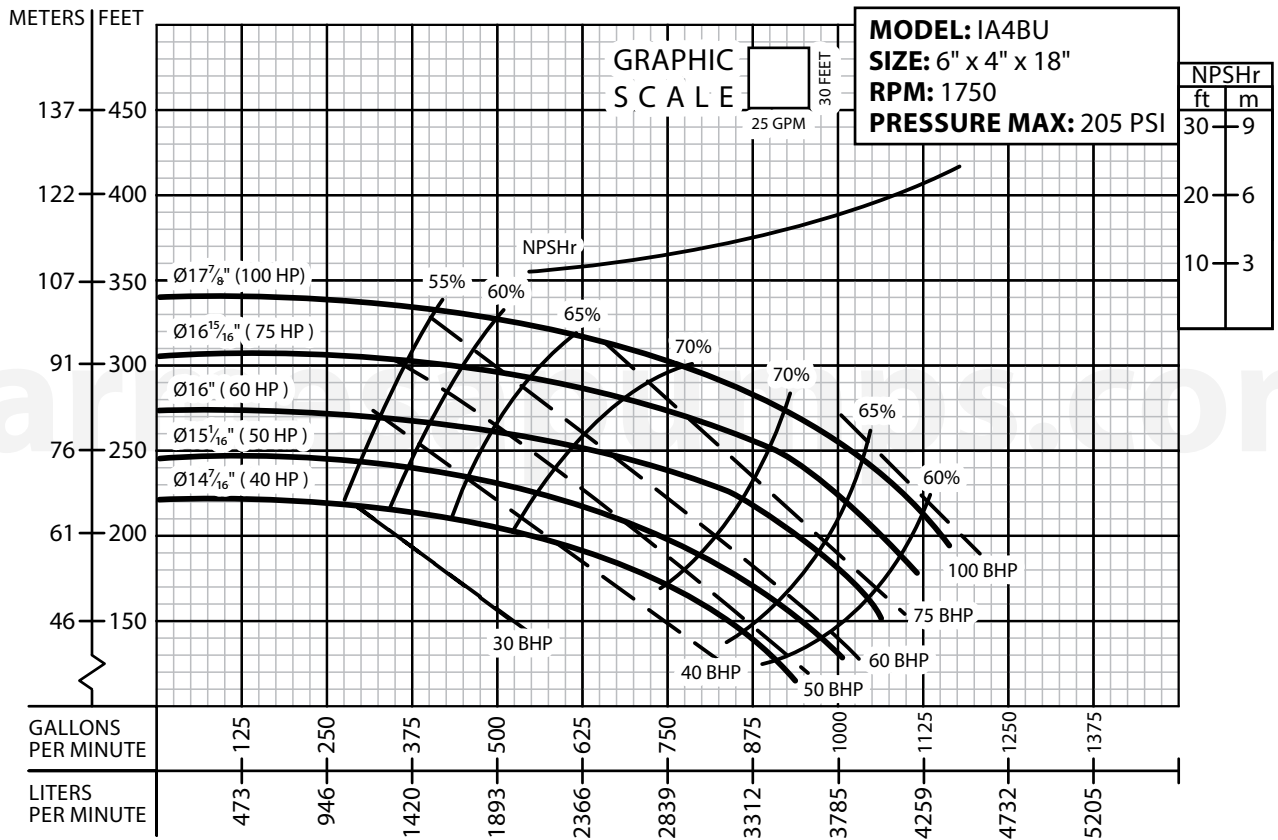
Testing is performed with water specific gravity of 1.0 @ 68 °F (20 °C); other fluids may vary performance.

**PERFORMANCE CURVE**  
End-Suction Centrifugal  
Series: **IA**



Testing is performed with water specific gravity of 1.0 @ 68 °F (20 °C); other fluids may vary performance.

**PERFORMANCE CURVE**  
End-Suction Centrifugal  
Series: **IA**



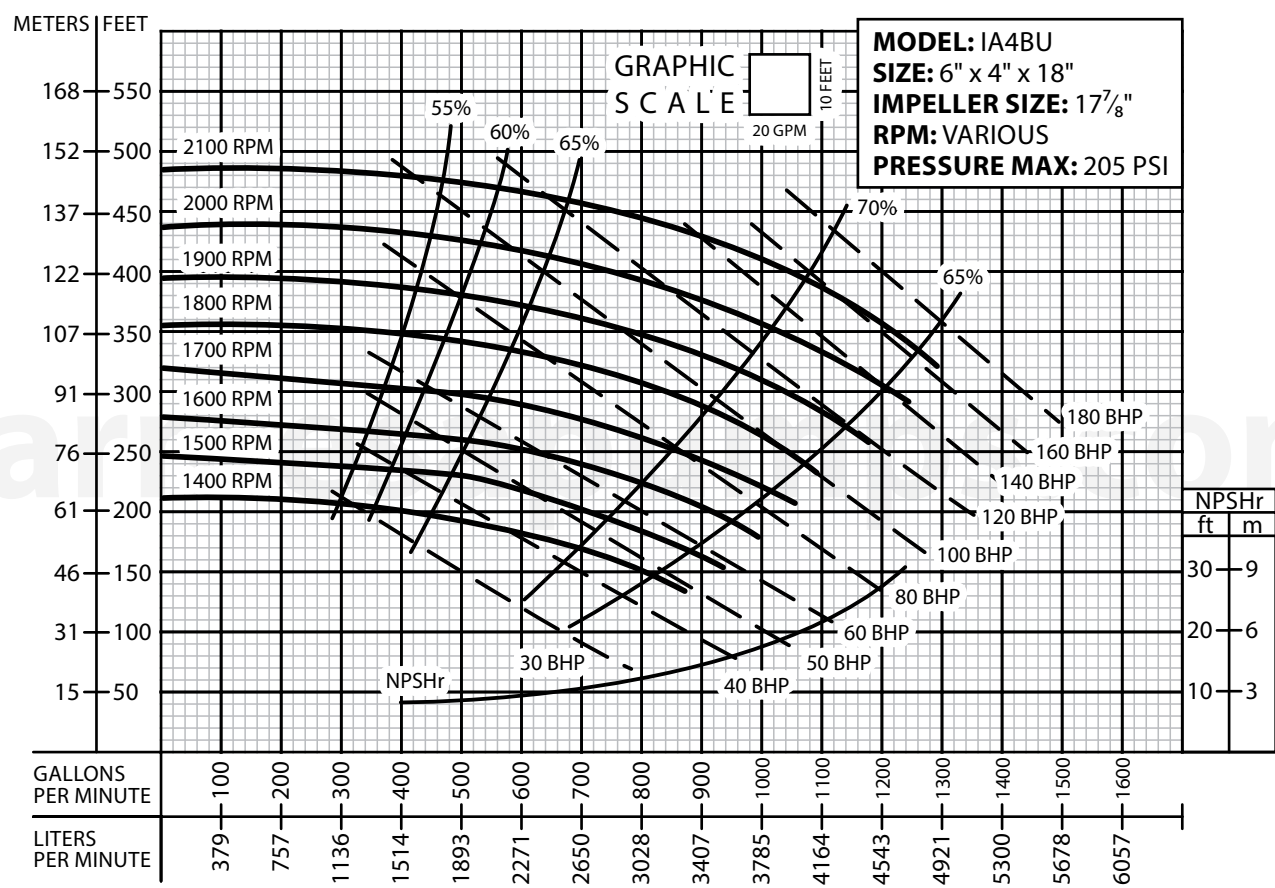
Testing is performed with water specific gravity of 1.0 @ 68 °F (20 °C); other fluids may vary performance.



# PERFORMANCE CURVE

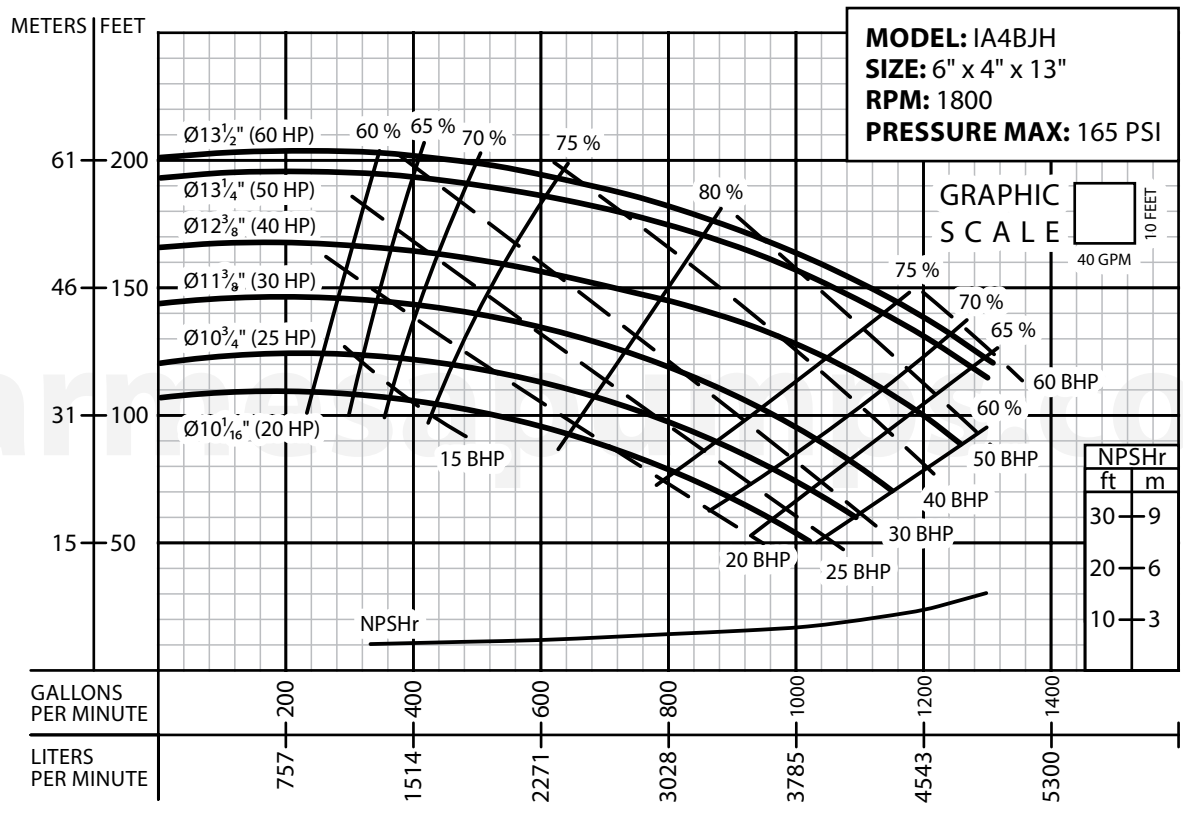
## End-Suction Centrifugal

### Series: IA



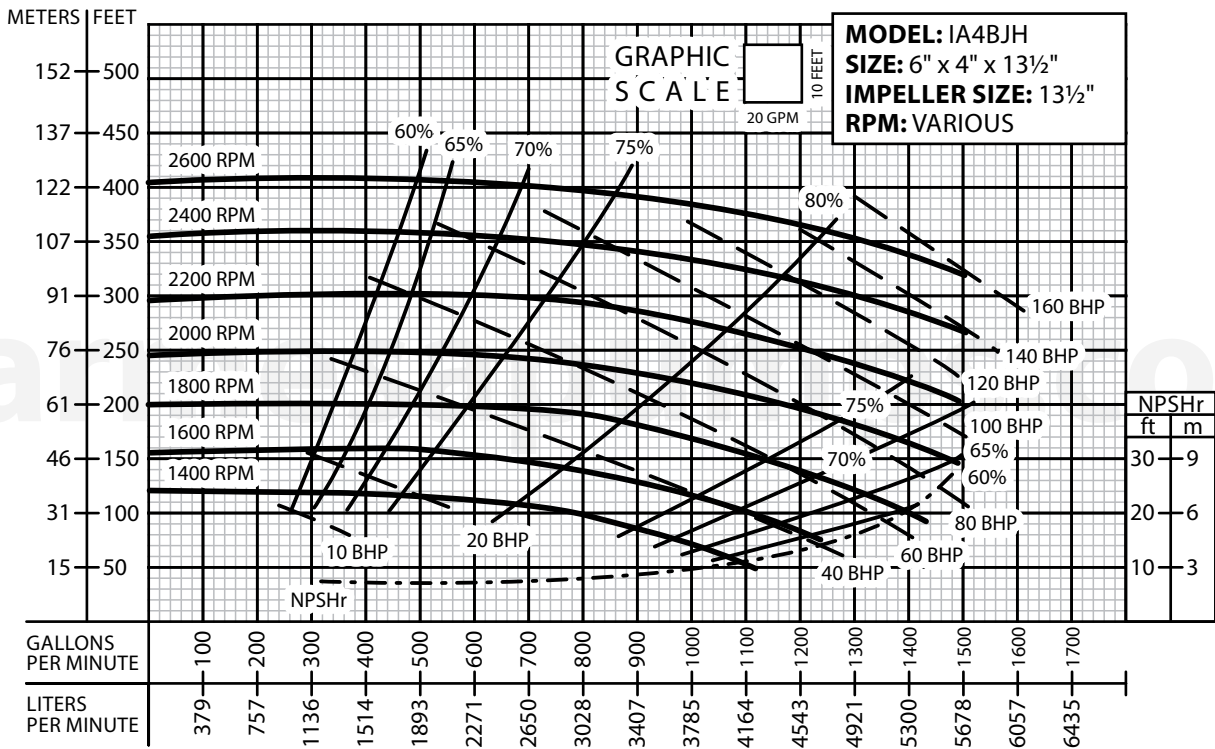
Testing is performed with water specific gravity of 1.0 @ 68 °F (20 °C); other fluids may vary performance.

**PERFORMANCE CURVE**  
End-Suction Centrifugal  
Series: **IA**



Testing is performed with water specific gravity of 1.0 @ 68 °F (20 °C); other fluids may vary performance.

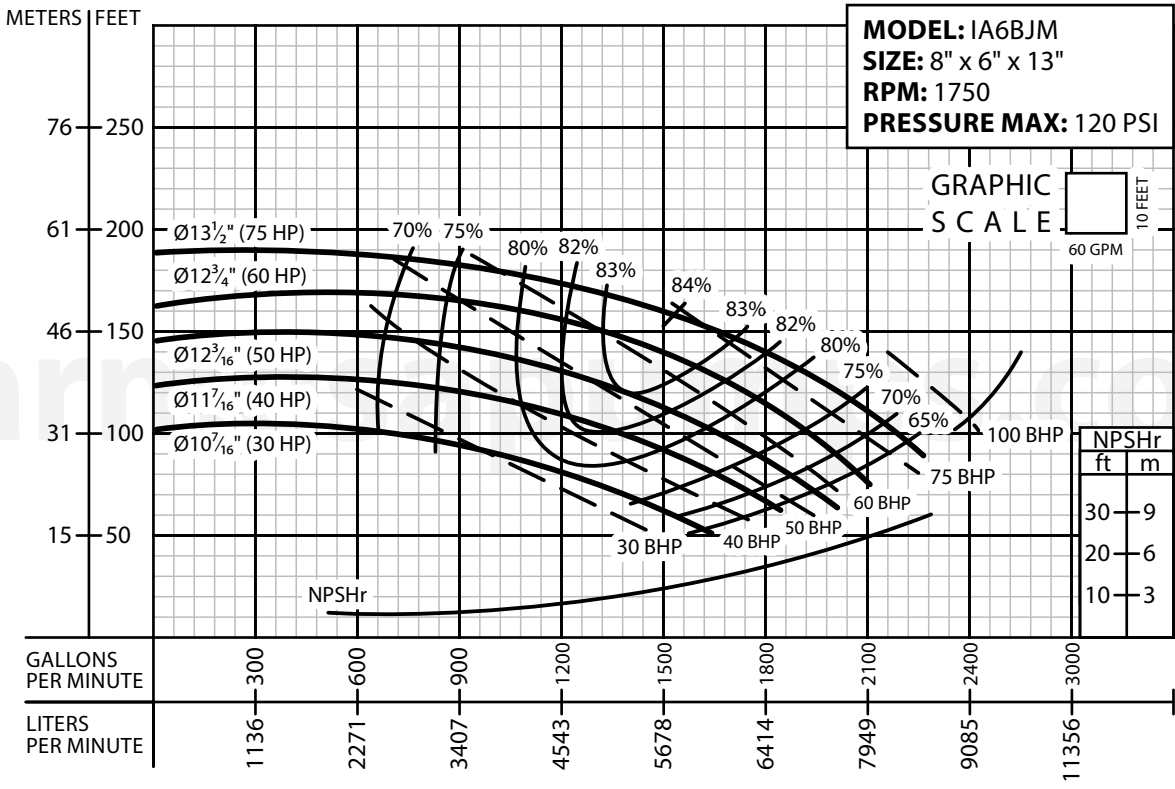
**PERFORMANCE CURVE**  
End-Suction Centrifugal  
Series: **IA**



Testing is performed with water specific gravity of 1.0 @ 68 °F (20 °C); other fluids may vary performance.

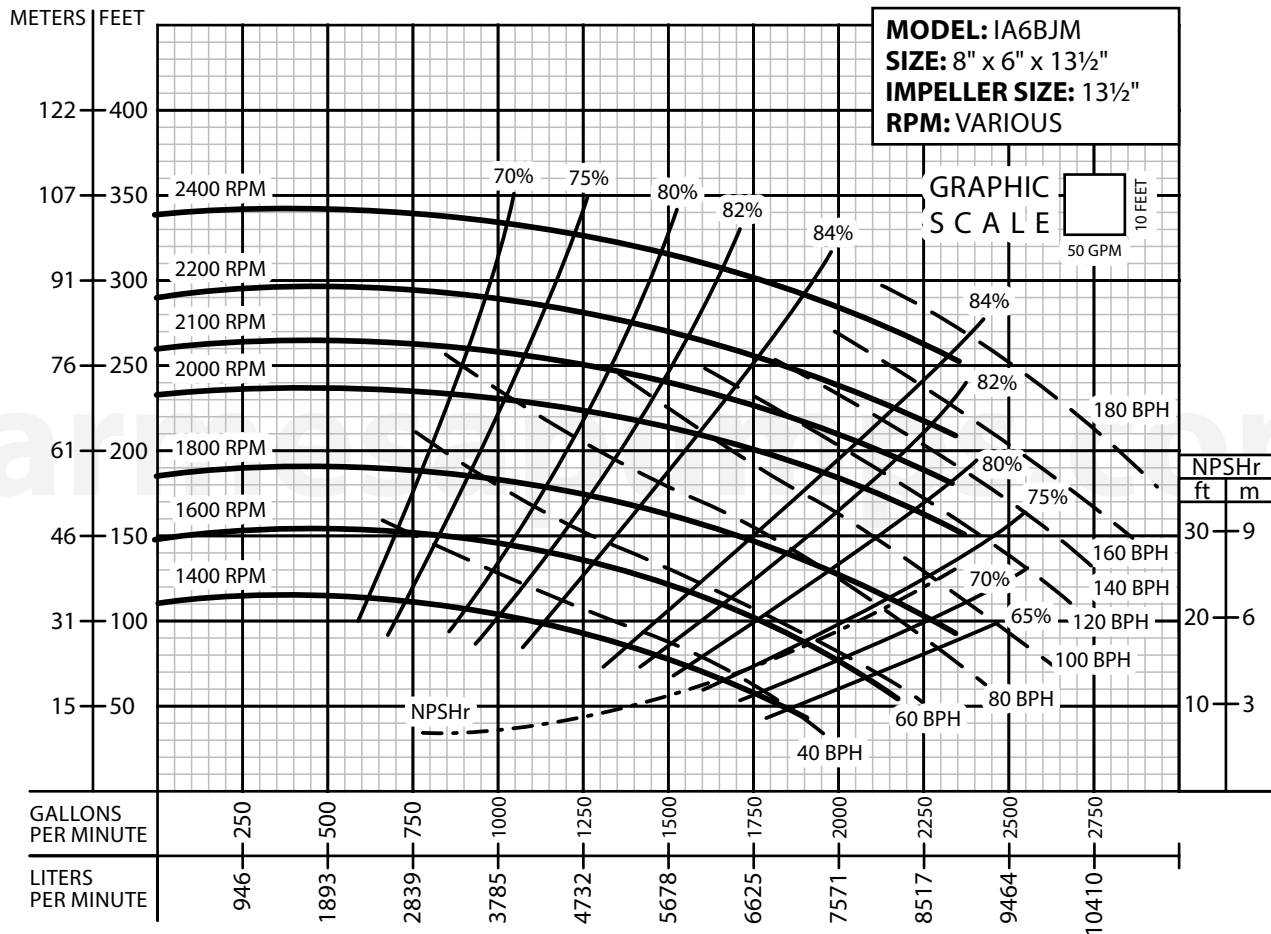


**PERFORMANCE CURVE**  
End-Suction Centrifugal  
Series: **IA**



Testing is performed with water specific gravity of 1.0 @ 68 °F (20 °C); other fluids may vary performance.

**PERFORMANCE CURVE**  
End-Suction Centrifugal  
Series: **IA**



Testing is performed with water specific gravity of 1.0 @ 68 °F (20 °C); other fluids may vary performance.